

\$699,000 - 92 Street, Peace River

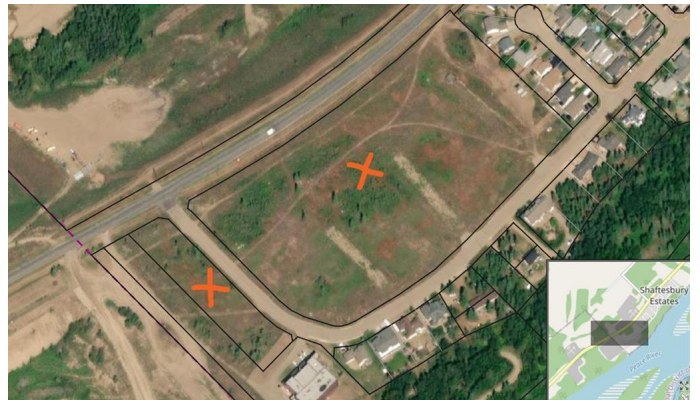
MLS® #A2015060

\$699,000

0 Bedroom, 0.00 Bathroom,
Land on 19.67 Acres

Shaftesbury Estates, Peace River, Alberta

Quick development potential exists with this 19.67 acre parcel of land located in Shaftesbury Estates. Located directly South of all of the existing homes in the neighborhood, plenty of planning and prep work has gone into this land making it the logical next choice for future residential development. Take advantage of all of the work that the current owner has done to make this next to shovel ready. The existing plans provision for 79 single family home lots but one could work with the town to create a 55+ community or townhouse style development. There is lots of potential here for someone with a vision. Call today to find out more!



Essential Information

MLS® #	A2015060
Price	\$699,000
Bathrooms	0.00
Acres	19.67
Type	Land
Sub-Type	Residential Land
Status	Active

Community Information

Address	92 Street
Subdivision	Shaftesbury Estates
City	Peace River
County	Peace No. 135, M.D. of

Province	Alberta
Postal Code	T8S 1R7

Additional Information

Date Listed	December 9th, 2022
Days on Market	853
Zoning	R1-A

Listing Details

Listing Office	RE/MAX Northern Realty
----------------	------------------------

Data is supplied by Pillar 9â„¢ MLSÂ® System. Pillar 9â„¢ is the owner of the copyright in its MLSÂ® System. Data is deemed reliable but is not guaranteed accurate by Pillar 9â„¢. The trademarks MLSÂ®, Multiple Listing ServiceÂ® and the associated logos are owned by The Canadian Real Estate Association (CREA) and identify the quality of services provided by real estate professionals who are members of CREA. Used under license.