

# **\$109,900 - 14043 Twp Rd 393, Rural Provost No. 52, M.D. of**

---

MLS® #A2041620

**\$109,900**

0 Bedroom, 0.00 Bathroom,  
Land on 8.01 Acres

NONE, Rural Provost No. 52, M.D. of, Alberta

This land is perfect for the family looking to build on a nice, private area. It is spacious, beautiful, peaceful and waiting for you to enjoy! The two door garage that is situated on the property is a great space for parking and storage! Also on the property, is two other out buildings, a barn and a shed. This property is fully serviced, meaning it is ready for your personal touch to become a home! The land is very close to the tranquil community of Hayter, within walking distance. It is also a very short 8 minute drive to Provost where you will find your main amenities. This beautiful and affordable piece of land is a must see! As you look over the fields you will be sure to envision the enjoyment this property could bring to you and your future.



## **Essential Information**

MLS® #	A2041620
Price	\$109,900
Bathrooms	0.00
Acres	8.01
Type	Land
Sub-Type	Residential Land
Status	Active

## **Community Information**

Address	14043 Twp Rd 393
---------	------------------

Subdivision NONE  
City Rural Provost No. 52, M.D. of  
County Provost No. 52, M.D. of  
Province Alberta  
Postal Code T0B1X0

**Amenities**

Utilities Natural Gas at Lot Line

**Exterior**

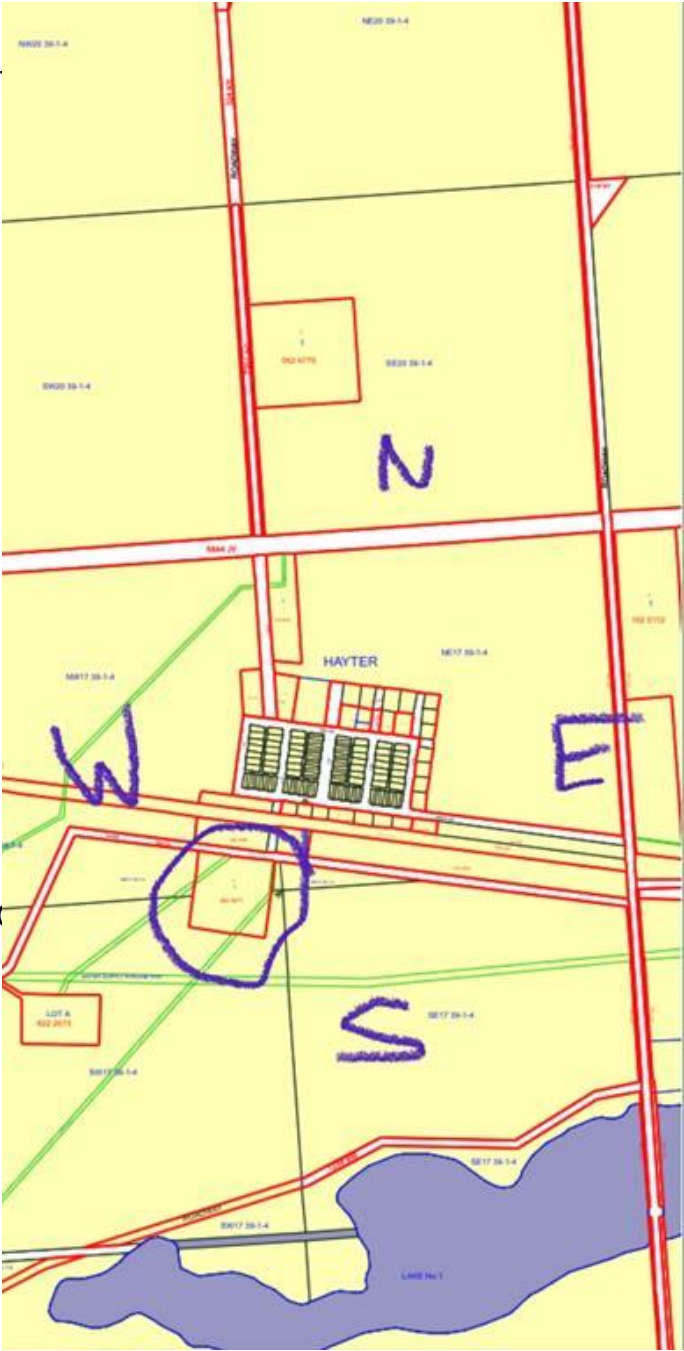
Lot Description Brush, Lawn, Private

**Additional Information**

Date Listed April 27th, 2023  
Days on Market 722  
Zoning Hamlet Reserve District

**Listing Details**

Listing Office ROYAL LEPAGE WRIGHT CH



Data is supplied by Pillar 9â„¢ MLSÂ® System. Pillar 9â„¢ is the owner of the copyright in its MLSÂ® System. Data is deemed reliable but is not guaranteed accurate by Pillar 9â„¢. The trademarks MLSÂ®, Multiple Listing ServiceÂ® and the associated logos are owned by The Canadian Real Estate Association (CREA) and identify the quality of services provided by real estate professionals who are members of CREA. Used under license.