

# \$1,500,000 - 13 61027 Highway 672, Rural Grande Prairie No. 1, County of

MLS® #A2098290

**\$1,500,000**

0 Bedroom, 0.00 Bathroom,  
Land on 10.88 Acres

Emerson Trail Industrial Park, Rural Grande Prairie No. 1, County of, Alberta

Huge Visibility for this vacant parcel of land zoned RM-2 (Rural Medium Industrial) in an excellent location right on the corner of Emerson Trail and Highway 2. The size is 10.88 acres and has great frontage. Services available to the edge of the property. One of the last parcels of land of this size available with such good exposure and access.

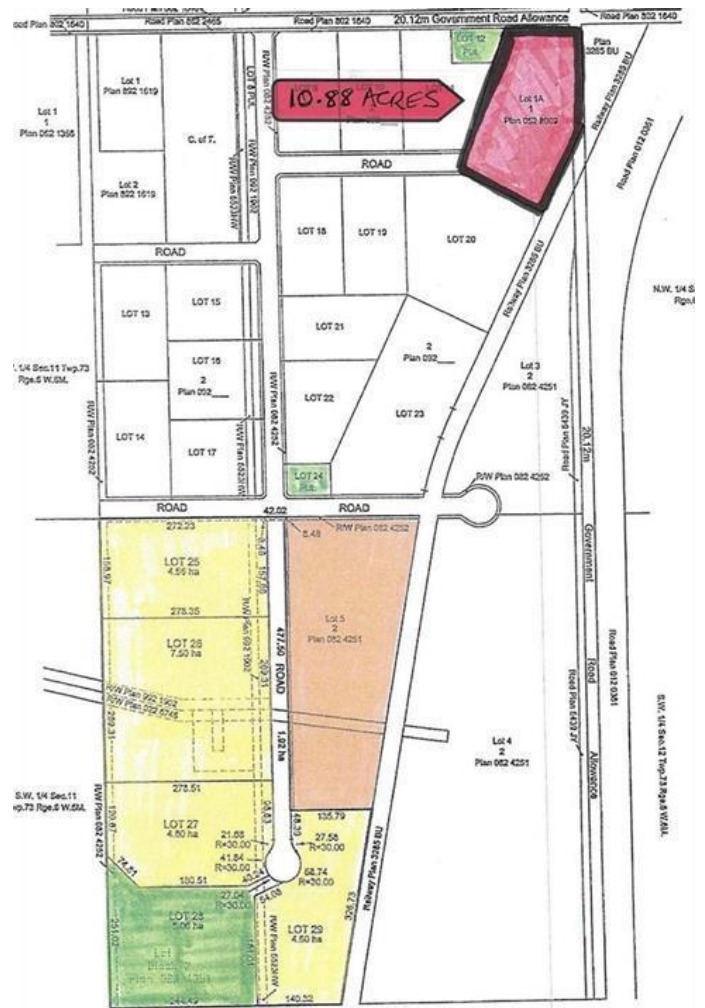
## Essential Information

MLS® #	A2098290
Price	\$1,500,000
Bathrooms	0.00
Acres	10.88
Type	Land
Sub-Type	Industrial Land
Status	Active

## Community Information

Address	13 61027 Highway 672
Subdivision	Emerson Trail Industrial Park
City	Rural Grande Prairie No. 1, County of
County	Grande Prairie No. 1, County of
Province	Alberta
Postal Code	T0H 3C0

## Exterior



Lot Description Corner Lot, Irregular Lot

### Additional Information

Date Listed December 19th, 2023

Days on Market 473

Zoning RM-2

### Listing Details

Listing Office Century 21 Grande Prairie Real



Data is supplied by Pillar 9â„¢ MLSÂ® System. Pillar 9â„¢ is the owner of the copyright in its MLSÂ® System. Data is deemed reliable but is not guaranteed accurate by Pillar 9â„¢. The trademarks MLSÂ® Multiple Listing ServiceÂ® and the associated logos are owned by The Canadian Real Estate Association (CREA) and identify the quality of services provided by real estate professionals who are members of CREA. Used under license.

