

\$525,000 - N/A, Calgary

MLS® #A2101252

\$525,000

0 Bedroom, 0.00 Bathroom,
Commercial on 0.00 Acres

N/A, Calgary, Alberta

Opportunity knocks with this rapidly growing franchise. Recently opened in a very desirable neighborhood in South Calgary, with a huge delivery coverage area. Busy intersection of Bow Bottom Trail and Canyon Meadows Drive. Great sales volume in just a few months of operation. Easy to use company app and available on food delivery platforms. Nearby businesses include Starbucks, Coop Gas, Grocery, and much more. This proven and successful franchise allows you to focus on running the location while they take care of all of the marketing and market development. Very easy to operate and ideal for an investor or an owner operator. Please do not disturb staff with any questions.

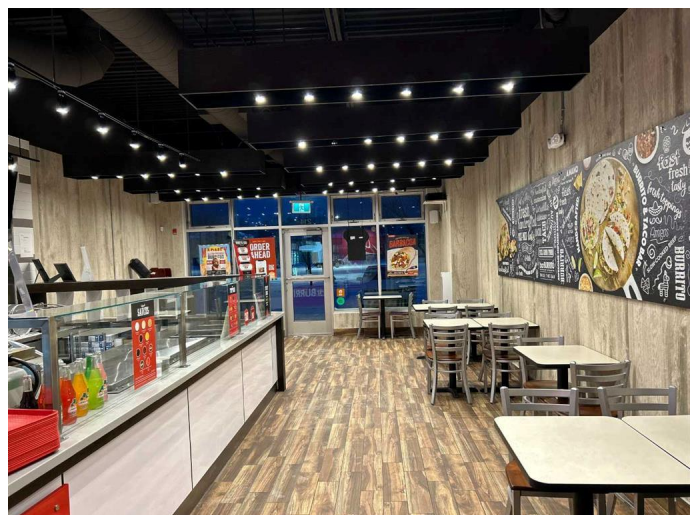
Built in 1980

Essential Information

MLS® #	A2101252
Price	\$525,000
Bathrooms	0.00
Acres	0.00
Year Built	1980
Type	Commercial
Sub-Type	Business
Status	Active

Community Information

Address	N/A
---------	-----



Subdivision	N/A
City	Calgary
County	Calgary
Province	Alberta

Additional Information

Date Listed	January 10th, 2024
Days on Market	464

Listing Details

Listing Office	Grey Power PD Realty Inc.
----------------	---------------------------

Data is supplied by Pillar 9â„¢ MLS® System. Pillar 9â„¢ is the owner of the copyright in its MLS® System. Data is deemed reliable but is not guaranteed accurate by Pillar 9â„¢. The trademarks MLS®, Multiple Listing Service® and the associated logos are owned by The Canadian Real Estate Association (CREA) and identify the quality of services provided by real estate professionals who are members of CREA. Used under license.