

\$56,000 - Lot 2 Blk 2 Lake Country Estate, Rural Athabasca County

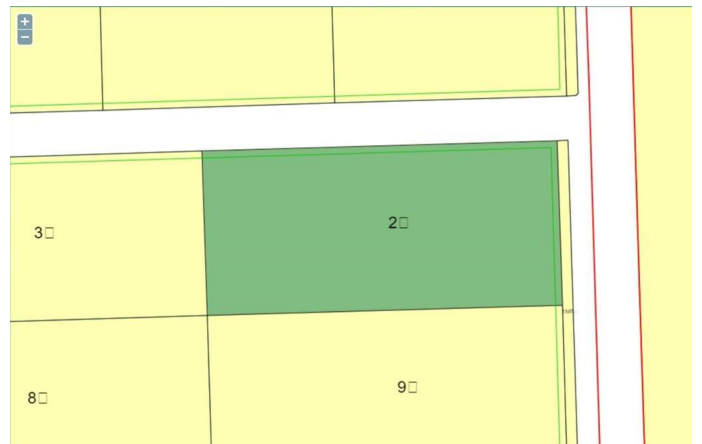
MLS® #A2113717

\$56,000

0 Bedroom, 0.00 Bathroom,
Land on 2.95 Acres

Lake Country Estates, Rural Athabasca
County, Alberta

A fantastic opportunity to own 2.95 Acres of LAND in Lake Country Estates close to Boyle and many lakes. Build your dream home or make it your very own oasis of a recreational get away. GOT TO LOVE HAVING OPTIONS!! There are only 3 LOTS left so don't miss out! This LOT is fully treed and is located West of Boyle on HWY 63. Only 20 Min away from Skeleton Lake and Golf course also Long Lake and golf course. This area is known for surrounded lakes, quadding, trails, boating, swimming, golfing, boating, skidoing and a beautiful community spirit in our village of Boyle. 1.5 hrs from Edmonton and 2.5 hrs from Fort McMurray. ACT NOW!!!



Essential Information

| | |
|-----------|------------------|
| MLS® # | A2113717 |
| Price | \$56,000 |
| Bathrooms | 0.00 |
| Acres | 2.95 |
| Type | Land |
| Sub-Type | Residential Land |
| Status | Active |

Community Information

| | |
|-------------|---------------------------------|
| Address | Lot 2 Blk 2 Lake Country Estate |
| Subdivision | Lake Country Estates |

| | |
|-------------|------------------------|
| City | Rural Athabasca County |
| County | Athabasca County |
| Province | Alberta |
| Postal Code | T0A0M0 |

Additional Information

| | |
|----------------|------------------|
| Date Listed | March 11th, 2024 |
| Days on Market | 391 |
| Zoning | RES |

Listing Details

| | |
|----------------|----------------|
| Listing Office | RE/MAX Connect |
|----------------|----------------|

Data is supplied by Pillar 9â„¸ MLSÂ® System. Pillar 9â„¸ is the owner of the copyright in its MLSÂ® System. Data is deemed reliable but is not guaranteed accurate by Pillar 9â„¸. The trademarks MLSÂ®, Multiple Listing ServiceÂ® and the associated logos are owned by The Canadian Real Estate Association (CREA) and identify the quality of services provided by real estate professionals who are members of CREA. Used under license.