

# \$375,000 - Highway 2a, Innisfail

MLS® #A2115386

**\$375,000**

0 Bedroom, 0.00 Bathroom,  
Land on 13.04 Acres

Highway 2A, Innisfail, Alberta

13.04 acres well position between Hwy 2A & QE2, just NE of Innisfail, Alberta. 584m of prime 2A frontage along the west boundary for access & maximum exposure. Property is contained within the Town of Innisfail Area Structure Plan. Property is located across from the Discovery Wildlife Park & Campground, Innisfail. Invest into Central Alberta's future industrial needs. Neighbouring 141.16 acre parcel (A2115387) sold in Jan 2025.

## Essential Information

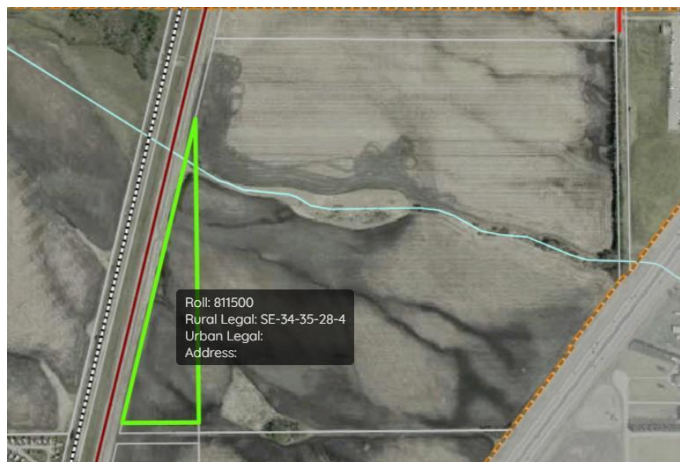
MLS® #	A2115386
Price	\$375,000
Bathrooms	0.00
Acres	13.04
Type	Land
Sub-Type	Commercial Land
Status	Active

## Community Information

Address	Highway 2a
Subdivision	Highway 2A
City	Innisfail
County	Red Deer County
Province	Alberta
Postal Code	T4G 0A4

## Exterior

Lot Description	Farm
-----------------	------



## **Additional Information**

Date Listed	March 27th, 2024
Days on Market	381
Zoning	RD

## **Listing Details**

Listing Office	Century 21 Advantage
----------------	----------------------

Data is supplied by Pillar 9â„¸ MLSÂ® System. Pillar 9â„¸ is the owner of the copyright in its MLSÂ® System. Data is deemed reliable but is not guaranteed accurate by Pillar 9â„¸. The trademarks MLSÂ®, Multiple Listing ServiceÂ® and the associated logos are owned by The Canadian Real Estate Association (CREA) and identify the quality of services provided by real estate professionals who are members of CREA. Used under license.