

\$169,900 - On Highway 2a, Rural Ponoka County

MLS® #A2128438

\$169,900

0 Bedroom, 0.00 Bathroom,
Land on 27.60 Acres

NONE, Rural Ponoka County, Alberta

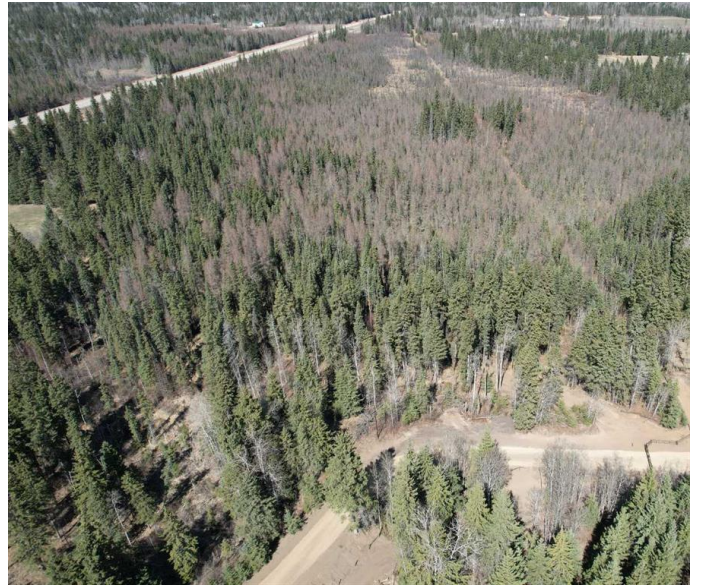
This parcel encompasses approximately 27.5 acres of land, characterized by a harmonious blend of spruce trees and pasture areas. There are a variety of ways you could choose to embrace the area's potential. If you aspire to build your dream home on a beautiful property in a coveted location, this is the place for you. Whether you're seeking a secluded retreat or a profitable investment, this acreage presents a rare opportunity to turn your dreams into reality. Can be bought individually or in conjunction with MLS A2128468

Essential Information

MLS® #	A2128438
Price	\$169,900
Bathrooms	0.00
Acres	27.60
Type	Land
Sub-Type	Residential Land
Status	Active

Community Information

Address	On Highway 2a
Subdivision	NONE
City	Rural Ponoka County
County	Ponoka County
Province	Alberta
Postal Code	T4J 1R5



Exterior

Lot Description Many Trees

Additional Information

Date Listed May 2nd, 2024

Days on Market 355

Zoning AG

Listing Details

Listing Office RE/MAX real estate central alberta

Data is supplied by Pillar 9â„¸ MLSÂ® System. Pillar 9â„¸ is the owner of the copyright in its MLSÂ® System. Data is deemed reliable but is not guaranteed accurate by Pillar 9â„¸. The trademarks MLSÂ®, Multiple Listing ServiceÂ® and the associated logos are owned by The Canadian Real Estate Association (CREA) and identify the quality of services provided by real estate professionals who are members of CREA. Used under license.