

\$210,000 - 546, 67325 Churchill Park Road, Lac La Biche

MLS® #A2145218

\$210,000

0 Bedroom, 0.00 Bathroom,
Land on 0.46 Acres

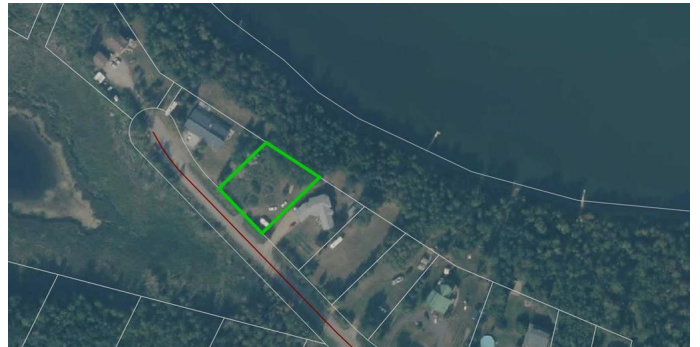
NONE, Lac La Biche, Alberta

Lakefront fully serviced lot in Lakeview Estates. Close to the Golf course, Boat Launches, partially cleared and ready for camping or building on.



Essential Information

MLS® #	A2145218
Price	\$210,000
Bathrooms	0.00
Acres	0.46
Type	Land
Sub-Type	Residential Land
Status	Active



Community Information

Address	546, 67325 Churchill Park Road
Subdivision	NONE
City	Lac La Biche
County	Lac La Biche County
Province	Alberta
Postal Code	T0A 2C0

Amenities

Is Waterfront	Yes
Waterfront	Beach Access, Lake Front, Waterfront, Canal Access

Additional Information

Date Listed	June 27th, 2024
Days on Market	259

Zoning

Country Residential

Listing Details

Listing Office

RE/MAX LA BICHE REALTY

Data is supplied by Pillar 9â„¸ MLSÂ® System. Pillar 9â„¸ is the owner of the copyright in its MLSÂ® System. Data is deemed reliable but is not guaranteed accurate by Pillar 9â„¸. The trademarks MLSÂ®, Multiple Listing ServiceÂ® and the associated logos are owned by The Canadian Real Estate Association (CREA) and identify the quality of services provided by real estate professionals who are members of CREA. Used under license.