

\$44,700 - 402 Canyon Court, Stavely

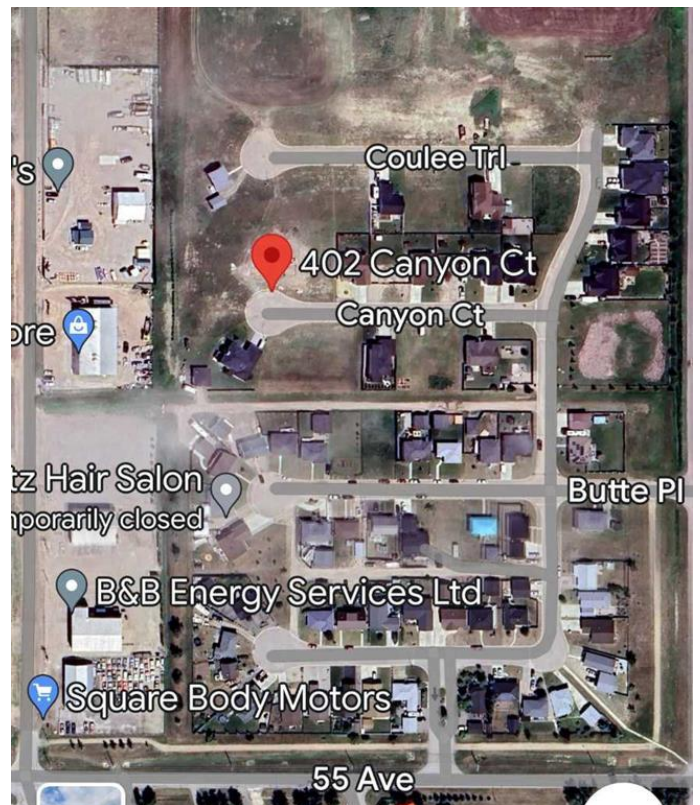
MLS® #A2146722

\$44,700

0 Bedroom, 0.00 Bathroom,
Land on 0.21 Acres

NONE, Stavely, Alberta

Vacant residential lot available in Stavely, AB, zoned RAC (Residential Architectural Control). This lot measures approximately 9147 square feet and has access to municipal water, sewer, natural gas, and electricity at the lot line. Stavely offers a range of amenities, including a K-6 Elementary School, Play school, golf course, dining options, hotel accommodations, Golden Age Club, ATB Bank Branch, convenience store, community hall, public camping, walking paths, hockey area, archery facilities, and a post office. The Town of Stavely is a thriving community of approximately 544 residents and growing. Located between Lethbridge and Calgary, an hours drive from either on Hwy 2, Stavely is surrounded by ideal ranching and farming areas. Rolling prairies to the east and foothills to the west include camping areas, fishing and hiking trails. Newcomers to the town and area will welcome the openness, friendliness and community spirit that the residents of Stavely pride themselves on. Please note, move-on homes or mobile homes may not be permitted in this subdivision. Would have to be approved thru town. Town of Stavely : website : <https://stavely.ca/>



Essential Information

MLS® #	A2146722
Price	\$44,700

Bathrooms 0.00
 Acres 0.21
 Type Land
 Sub-Type Residential Land
 Status Active

Community Information

Address 402 Canyon Court
 Subdivision NONE
 City Stavely
 County Willow Creek No. 26, M.D. of
 Province Alberta
 Postal Code T0L1Z0

Exterior

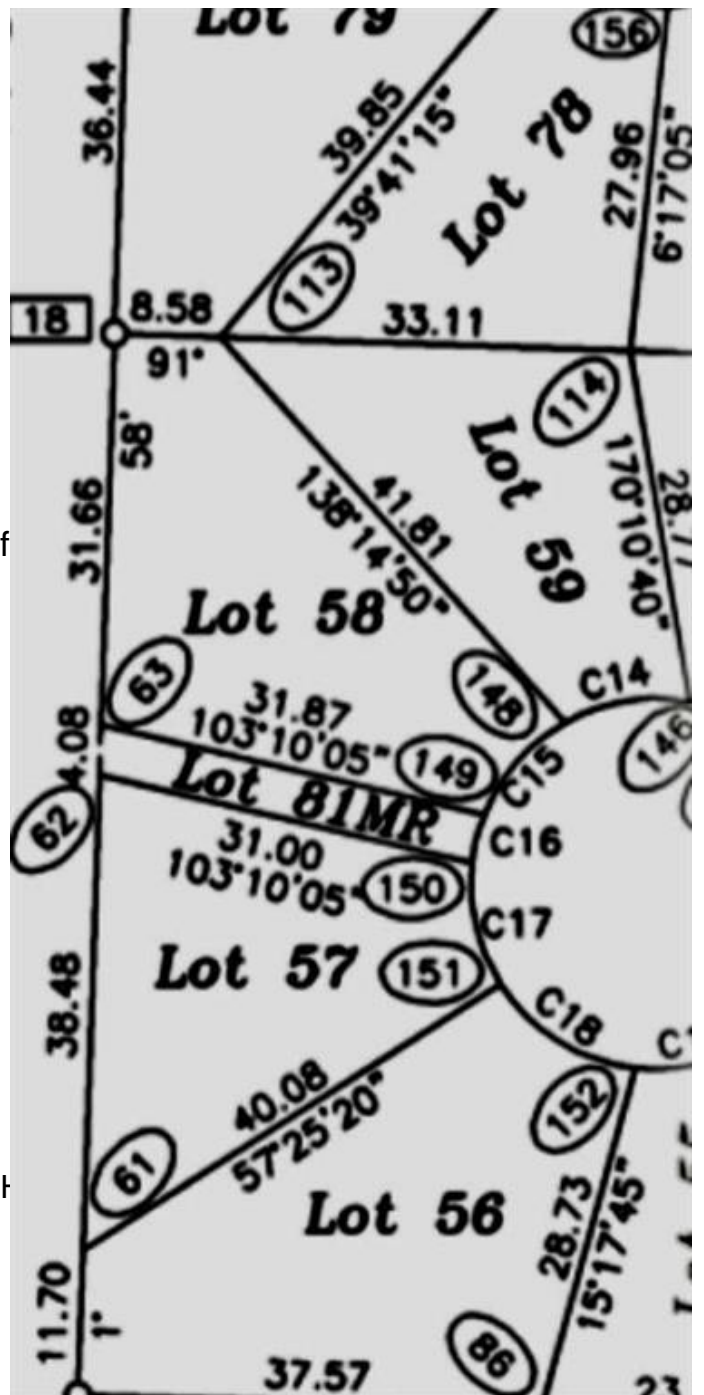
Lot Description Cul-De-Sac

Additional Information

Date Listed July 8th, 2024
 Days on Market 249
 Zoning Vacant Residential

Listing Details

Listing Office RE/MAX REAL ESTATE - LETH



Data is supplied by Pillar 9â„¢ MLSÂ© System. Pillar 9â„¢ is the owner of the copyright in its MLSÂ© System. Data is deemed reliable but is not guaranteed accurate by Pillar 9â„¢. The trademarks MLSÂ©, Multiple Listing ServiceÂ© and the associated logos are owned by The Canadian Real Estate Association (CREA) and identify the quality of services provided by real estate professionals who are members of CREA. Used under license.