

# \$155,000 - 2, 53114 Highway 31, Rural Parkland County

MLS® #A2167688

**\$155,000**

4 Bedroom, 1.00 Bathroom, 766 sqft

Residential on 0.33 Acres

NONE, Rural Parkland County, Alberta

House on full basement on a large lot in Seba beach.

Built in 1950

## Essential Information

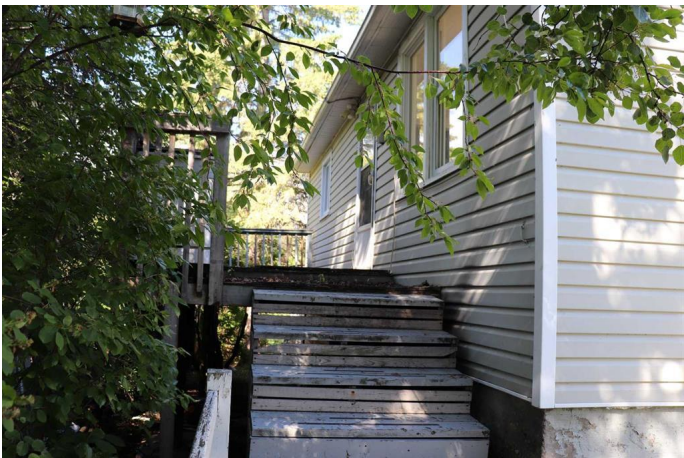
MLS® #	A2167688
Price	\$155,000
Bedrooms	4
Bathrooms	1.00
Full Baths	1
Square Footage	766
Acres	0.33
Year Built	1950
Type	Residential
Sub-Type	Detached
Style	Bungalow
Status	Active

## Community Information

Address	2, 53114 Highway 31
Subdivision	NONE
City	Rural Parkland County
County	Parkland County
Province	Alberta
Postal Code	T0E 2B0

## Amenities

Parking Spaces	2
Parking	Driveway, None



## Interior

Interior Features	Ceiling Fan(s)
Appliances	None
Heating	Forced Air, Natural Gas
Cooling	None
Has Basement	Yes
Basement	Finished, Full

## Exterior

Exterior Features	Garden
Lot Description	Rectangular Lot
Roof	Asphalt Shingle
Construction	Vinyl Siding, Wood Siding
Foundation	Poured Concrete

## Additional Information

Date Listed	September 23rd, 2024
Days on Market	210
Zoning	CRD

## Listing Details

Listing Office	RE/MAX BOXSHAW FOUR REALTY
----------------	----------------------------

Data is supplied by Pillar 9â„¢ MLSÂ® System. Pillar 9â„¢ is the owner of the copyright in its MLSÂ® System. Data is deemed reliable but is not guaranteed accurate by Pillar 9â„¢. The trademarks MLSÂ®, Multiple Listing ServiceÂ® and the associated logos are owned by The Canadian Real Estate Association (CREA) and identify the quality of services provided by real estate professionals who are members of CREA. Used under license.