

\$185,000 - 11, 420069 Range Road 284, Rural Ponoka County

MLS® #A2175570

\$185,000

0 Bedroom, 0.00 Bathroom,
Land on 2.00 Acres

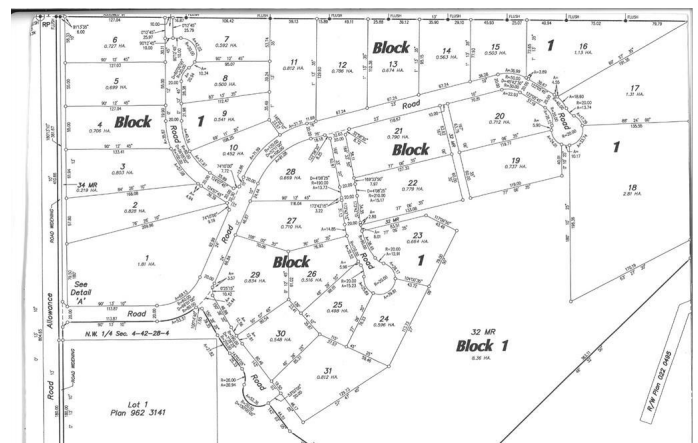
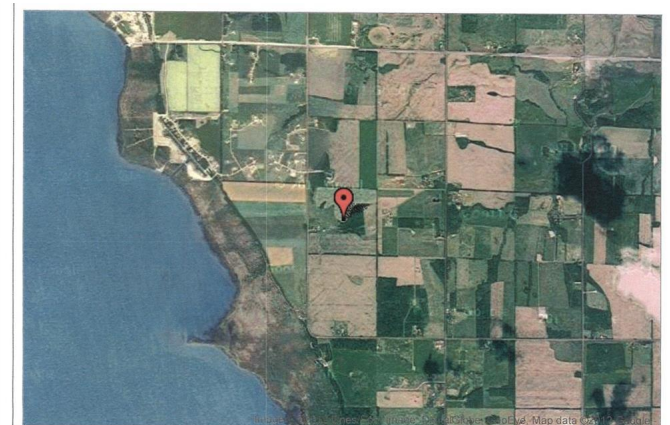
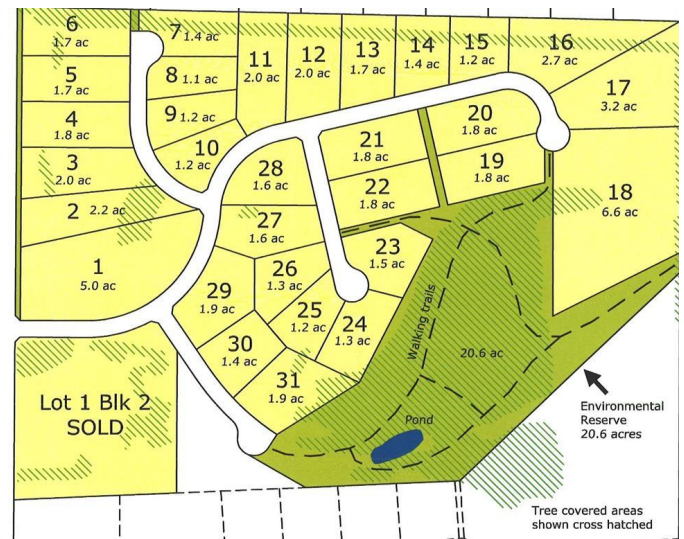
Grandview Estates, Rural Ponoka County,
Alberta

Welcome to one of Gull Lake's perhaps finest country home development. Grandview Estates. Boasting an upscale architecturally controlled subdivision that is intertwined amongst 30 acres of environmental reserve featuring established walking trails, abundant wildlife, local history. The view is so amazing that it is better described as an experience. Every lot boasts a spectacular view of the lake; some views encompass the entire length of Gull Lake. Imagine closing every single day with yet another uniquely pleasing sunset. Boat access is 5 minutes away at the Raymond Shores public boat launch. Taxes have not been assessed yet. Grandview Estates is a 31 lot acreage subdivision with acreages ranging from 1 to 6 acres in size and prices ranging from \$85,000 to \$275,000

Essential Information

MLS® #	A2175570
Price	\$185,000
Bathrooms	0.00
Acres	2.00
Type	Land
Sub-Type	Residential Land
Status	Active

Community Information



Address	11, 420069 Range Road 284
Subdivision	Grandview Estates
City	Rural Ponoka County
County	Ponoka County
Province	Alberta
Postal Code	T4J 1R3

Additional Information

Date Listed	October 25th, 2024
Days on Market	177
Zoning	CR

Listing Details

Listing Office	Royal LePage Lifestyles Realty
----------------	--------------------------------

Data is supplied by Pillar 9â„¢ MLSÂ® System. Pillar 9â„¢ is the owner of the copyright in its MLSÂ® System. Data is deemed reliable but is not guaranteed accurate by Pillar 9â„¢. The trademarks MLSÂ®, Multiple Listing ServiceÂ® and the associated logos are owned by The Canadian Real Estate Association (CREA) and identify the quality of services provided by real estate professionals who are members of CREA. Used under license.