

\$599,000 - Portion Of Ne 2 74 9 W6 & Nw 2 74 9 W6, La Glace

MLS® #A2175896

\$599,000

0 Bedroom, 0.00 Bathroom,
Agri-Business on 229.80 Acres

NONE, La Glace, Alberta

229.8+/- Acres on 2 titles selling together as 1 parcel, 100 acres more or less being farmed. 2024 crop was canola and hay.; The balance of acres are pasture, bush, creek and La Glace Lake shoreline. Excellent land for farming, pasture and recreation. Call your Realtor today for more information.

Essential Information

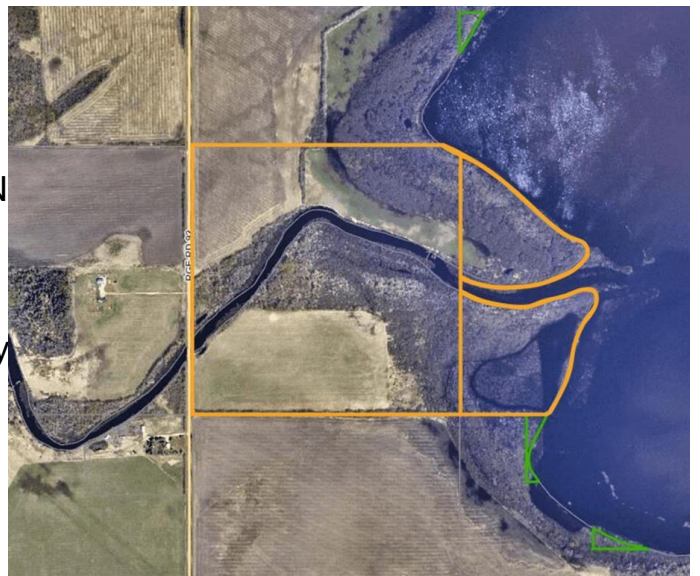
| | |
|-----------|---------------|
| MLS® # | A2175896 |
| Price | \$599,000 |
| Bathrooms | 0.00 |
| Acres | 229.80 |
| Type | Agri-Business |
| Sub-Type | Agriculture |
| Status | Active |

Community Information

| | |
|-------------|------------------------------|
| Address | Portion Of Ne 2 74 9 W6 & N |
| Subdivision | NONE |
| City | La Glace |
| County | Grande Prairie No. 1, County |
| Province | Alberta |
| Postal Code | T0H 2J0 |

Additional Information

| | |
|----------------|--------------------|
| Date Listed | October 28th, 2024 |
| Days on Market | 169 |



Zoning AG

Listing Details

Listing Office All Peace Realty Ltd.

Data is supplied by Pillar 9â„¸ MLSÂ® System. Pillar 9â„¸ is the owner of the copyright in its MLSÂ® System. Data is deemed reliable but is not guaranteed accurate by Pillar 9â„¸. The trademarks MLSÂ®, Multiple Listing ServiceÂ® and the associated logos are owned by The Canadian Real Estate Association (CREA) and identify the quality of services provided by real estate professionals who are members of CREA. Used under license.