

\$3,000,000 - 83048 211b, Rural Lethbridge County

MLS® #A2181584

\$3,000,000

0 Bedroom, 0.00 Bathroom,
Agri-Business on 0.00 Acres

NONE, Rural Lethbridge County, Alberta

Located just outside of Lethbridge, this 39.36-acre parcel offers exceptional development potential. With its close proximity to Highway 4, this land is easily accessible, providing a convenient gateway to the city and beyond. The property backs onto the growing commercial area of Stewart Siding.

Essential Information

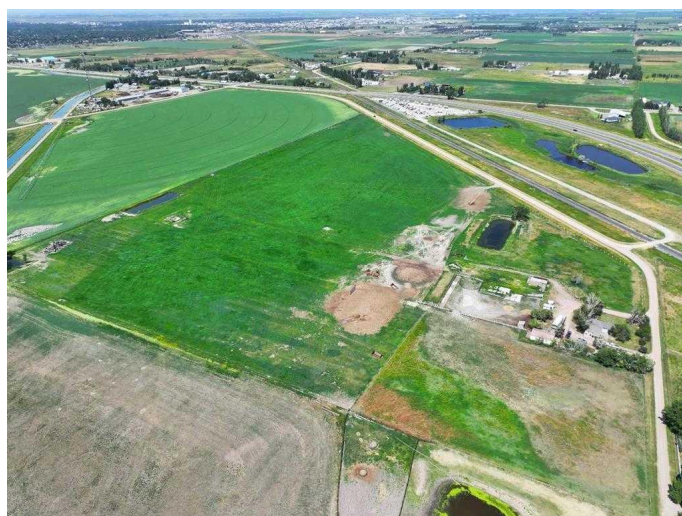
MLS® #	A2181584
Price	\$3,000,000
Bathrooms	0.00
Acres	0.00
Type	Agri-Business
Sub-Type	Agriculture
Status	Active

Community Information

Address	83048 211b
Subdivision	NONE
City	Rural Lethbridge County
County	Lethbridge County
Province	Alberta
Postal Code	T1K 8H4

Additional Information

Date Listed	December 6th, 2024
Days on Market	144
Zoning	Agricultural



Listing Details

Listing Office Grassroots Realty Group

Data is supplied by Pillar 9â„¢ MLS® System. Pillar 9â„¢ is the owner of the copyright in its MLS® System. Data is deemed reliable but is not guaranteed accurate by Pillar 9â„¢. The trademarks MLS®, Multiple Listing Service® and the associated logos are owned by The Canadian Real Estate Association (CREA) and identify the quality of services provided by real estate professionals who are members of CREA. Used under license.