

\$399,000 - 517 Arbourwood Terrace S, Lethbridge

MLS® #A2190261

\$399,000

0 Bedroom, 0.00 Bathroom,
Land on 0.35 Acres

Arbour Ridge, Lethbridge, Alberta

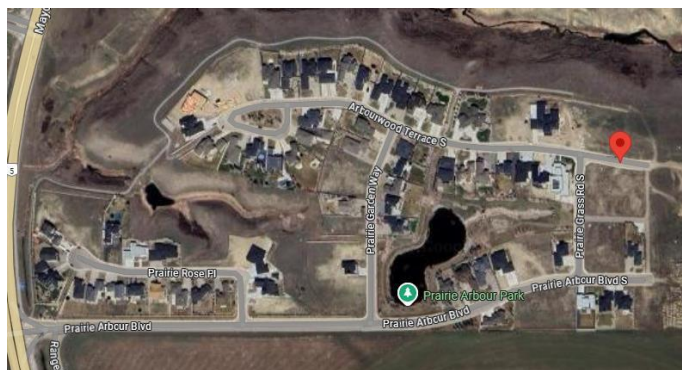
Welcome to Prairie Arbour Estates! This community is the premier destination for estate living in south Lethbridge and serves as the benchmark for upscale developments in southern Alberta. Prairie Arbour Estates boasts unrivaled views of Six Mile Coulee and easy access to walking trails and the spectacular Prairie Arbour Park. This 0.35 acre lot is a rare gem; backing onto the environmental reserve and fenced with gate access to the walking paths. Coulee view lots are in limited quantity and lots of this size are even more limited and sell quickly. Comparative market value for a lot of this size and location makes this property a tremendously valuable investment.

Essential Information

MLS® #	A2190261
Price	\$399,000
Bathrooms	0.00
Acres	0.35
Type	Land
Sub-Type	Residential Land
Status	Active

Community Information

Address	517 Arbourwood Terrace S
Subdivision	Arbour Ridge
City	Lethbridge



County	Lethbridge
Province	Alberta
Postal Code	T1K 5W3

Exterior

Lot Description	Environmental Reserve, No Neighbours Behind, Street Lighting
-----------------	--

Additional Information

Date Listed	January 26th, 2025
Days on Market	84
Zoning	DC

Listing Details

Listing Office	REAL BROKER
----------------	-------------

Data is supplied by Pillar 9â„¢ MLS® System. Pillar 9â„¢ is the owner of the copyright in its MLS® System. Data is deemed reliable but is not guaranteed accurate by Pillar 9â„¢. The trademarks MLS®, Multiple Listing Service® and the associated logos are owned by The Canadian Real Estate Association (CREA) and identify the quality of services provided by real estate professionals who are members of CREA. Used under license.