

\$1,750,000 - 4-20-13-36 Ne Nw Se Sw County Of Lethbridge, Rural Lethbridge County

MLS® #A2192698

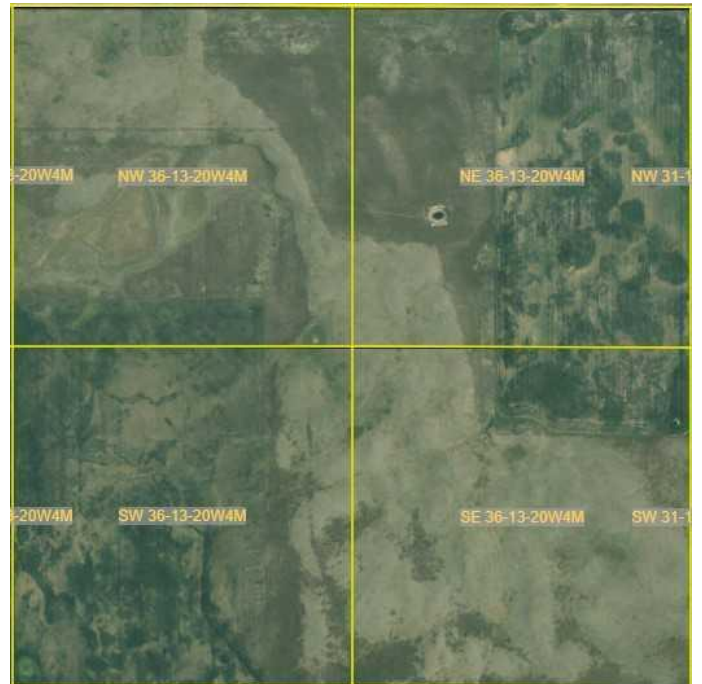
\$1,750,000

0 Bedroom, 0.00 Bathroom,
Agri-Business on 638.00 Acres

NONE, Rural Lethbridge County, Alberta

638 Acres available at the north end of the County of Lethbridge. 15 miles northwest of the Hamlet of Turin and 10 miles west of Enchant. Mostly pasture and approximately 165 cultivated acres located one mile from Highway 845. There is also \$5000 income from a surface lease.

Close to Little Bow River.



Essential Information

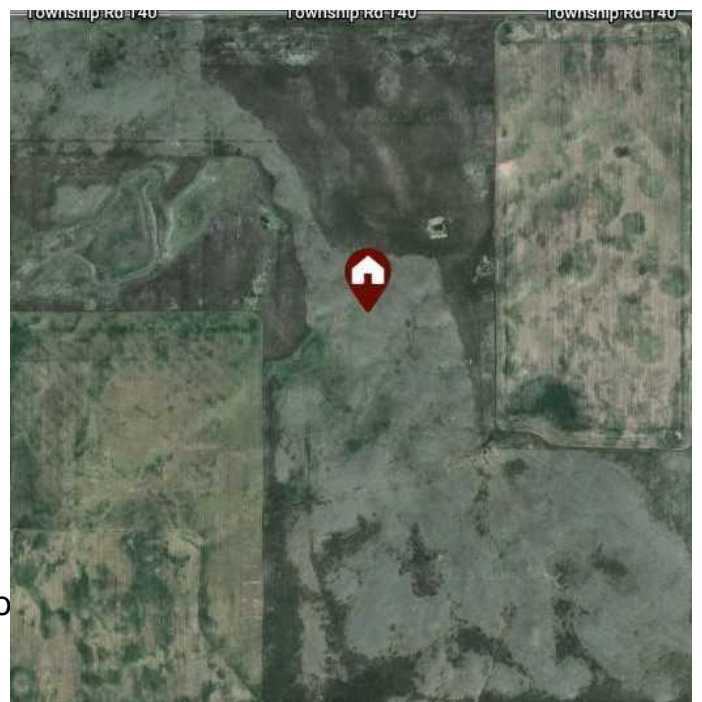
MLS® #	A2192698
Price	\$1,750,000
Bathrooms	0.00
Acres	638.00
Type	Agri-Business
Sub-Type	Agriculture
Status	Active

Community Information

Address	4-20-13-36 Ne Nw Se Sw Co
Subdivision	NONE
City	Rural Lethbridge County
County	Lethbridge County
Province	Alberta
Postal Code	T0K 2H0

Additional Information

Date Listed	February 6th, 2025
-------------	--------------------



Days on Market 74
Zoning AG

Listing Details

Listing Office RE/MAX Landan Real Estate

Data is supplied by Pillar 9â„¢ MLSÂ® System. Pillar 9â„¢ is the owner of the copyright in its MLSÂ® System. Data is deemed reliable but is not guaranteed accurate by Pillar 9â„¢. The trademarks MLSÂ®, Multiple Listing ServiceÂ® and the associated logos are owned by The Canadian Real Estate Association (CREA) and identify the quality of services provided by real estate professionals who are members of CREA. Used under license.