

\$20,000 - 314 Whispering Way, Vulcan

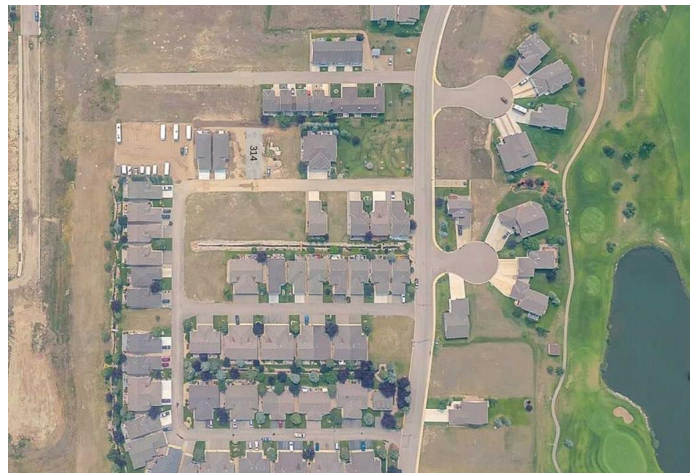
MLS® #A2192732

\$20,000

0 Bedroom, 0.00 Bathroom,
Land on 0.08 Acres

NONE, Vulcan, Alberta

Welcome to Whispering Creek Condominiums in the golf community of Whispering Creek, Vulcan, an exclusive adult (55+) community. Say goodbye to cutting grass and shoveling snow as your condo fees look after those chores. No commitment to start building and \$30 per month covers maintenance on the vacant lot. Vulcan is conveniently located 1 hour from Calgary or Lethbridge but with a hospital, golf course, shopping, medical services, you might never need to leave town! Backyard faces south. GST is applicable



Essential Information

MLS® #	A2192732
Price	\$20,000
Bathrooms	0.00
Acres	0.08
Type	Land
Sub-Type	Residential Land
Status	Active

Community Information

Address	314 Whispering Way
Subdivision	NONE
City	Vulcan
County	Vulcan County
Province	Alberta
Postal Code	T0L 2B0

Amenities

Amenities Other

Additional Information

Date Listed February 5th, 2025

Days on Market 71

Zoning R1

Listing Details

Listing Office RE/MAX Complete Realty

Data is supplied by Pillar 9â„¸ MLSÂ® System. Pillar 9â„¸ is the owner of the copyright in its MLSÂ® System. Data is deemed reliable but is not guaranteed accurate by Pillar 9â„¸. The trademarks MLSÂ®, Multiple Listing ServiceÂ® and the associated logos are owned by The Canadian Real Estate Association (CREA) and identify the quality of services provided by real estate professionals who are members of CREA. Used under license.