

\$319,900 - 116, 6440 4 Street Nw, Calgary

MLS® #A2192758

\$319,900

3 Bedroom, 2.00 Bathroom, 1,088 sqft
Residential on 0.00 Acres

Thornccliffe, Calgary, Alberta

End unit 2 storey townhouse with 3 bedrooms and 1 and 1/2 baths in nice location in Thornccliffe Village. U shaped kitchen with lots of cupboards and adjoining dining area. Stove replaced 2 years ago. Hardwood floors in living room and laundry is in the basement. Undeveloped basement ready for you to develop. Lots of amenities close to the complex and walking distance to Superstore, schools, public library and more.

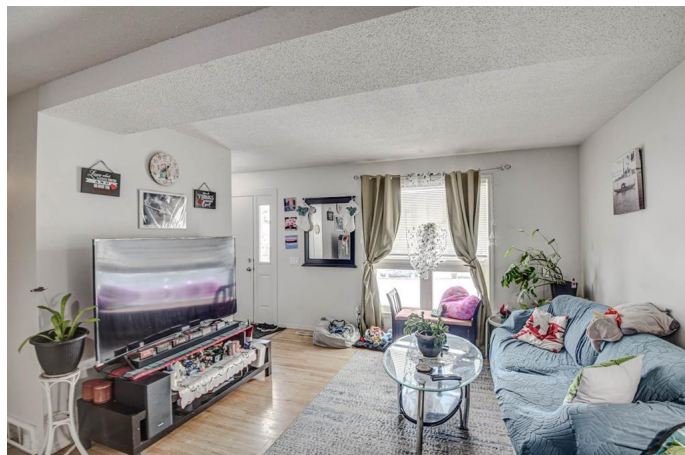
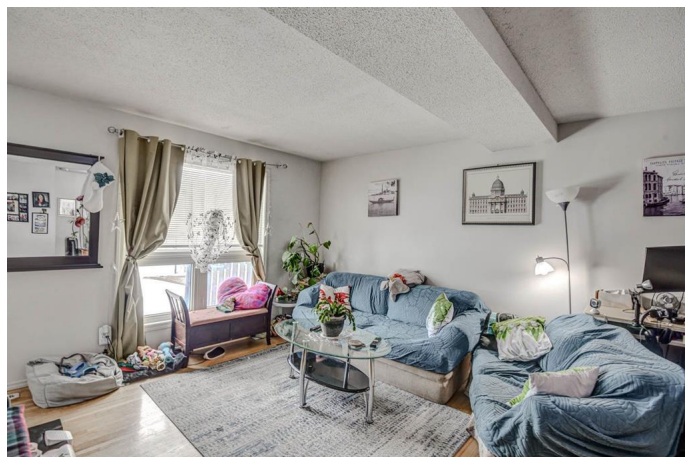
Built in 1969

Essential Information

MLS® #	A2192758
Price	\$319,900
Bedrooms	3
Bathrooms	2.00
Full Baths	1
Half Baths	1
Square Footage	1,088
Acres	0.00
Year Built	1969
Type	Residential
Sub-Type	Row/Townhouse
Style	2 Storey
Status	Active

Community Information

Address 116, 6440 4 Street Nw



Subdivision	Thornccliffe
City	Calgary
County	Calgary
Province	Alberta
Postal Code	T4A0B5

Amenities

Amenities	None
Parking Spaces	1
Parking	Stall

Interior

Interior Features	See Remarks
Appliances	Dryer, Electric Stove, Range Hood, Refrigerator, Washer
Heating	Forced Air
Cooling	None
Has Basement	Yes
Basement	Full, Unfinished

Exterior

Exterior Features	Playground
Lot Description	Front Yard
Roof	Asphalt Shingle
Construction	Concrete, Wood Frame
Foundation	Poured Concrete

Additional Information

Date Listed	February 8th, 2025
Days on Market	63
Zoning	M-C1

Listing Details

Listing Office	Diamond Realty & Associates LTD.
----------------	----------------------------------

Data is supplied by Pillar 9â„¢ MLSÂ® System. Pillar 9â„¢ is the owner of the copyright in its MLSÂ® System. Data is deemed reliable but is not guaranteed accurate by Pillar 9â„¢. The trademarks MLSÂ®, Multiple Listing ServiceÂ® and the associated logos are owned by The Canadian Real Estate Association (CREA) and identify the quality of services provided by real estate professionals who are members of CREA. Used under license.