

\$190,000 - 1104, 330 Clareview Station Drive Nw, Edmonton

MLS® #A2194120

\$190,000

2 Bedroom, 2.00 Bathroom, 1,115 sqft

Residential on 0.00 Acres

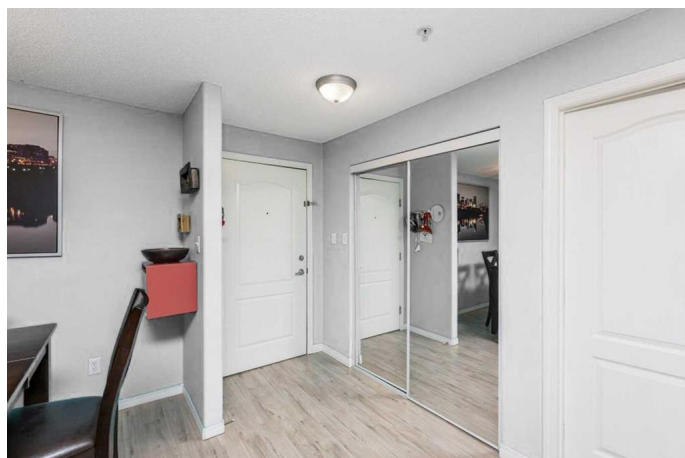
Clareview Town Centre, Edmonton, Alberta

Need access to LRT? This lovely condo is just steps to transit for ease of getting around. Very spacious with many upgrades this 2 bedroom condo is well laid out with large open living and kitchen/dining area. Most of the flooring has been replaced with a high end laminate. The kitchen boasts new back splash, stainless steel appliances and a moveable island. The master bedroom features a walk in closet and 4 piece ensuite. There is also a second bedroom and 4 pce bathroom. There is plenty of storage and in-suite laundry. There are patio doors that lead to south facing patio if you want to sit out on a summer evening. You don't need a gym membership - there are facilities on site for your convenience. Excellent location if you are a student or professional looking for easy access to downtown or U or A. Other amenities are within walking distance or a short drive. Exceptional value for all this square footage!

Built in 2007

Essential Information

MLS® #	A2194120
Price	\$190,000
Bedrooms	2
Bathrooms	2.00



Full Baths	2
Square Footage	1,115
Acres	0.00
Year Built	2007
Type	Residential
Sub-Type	Apartment
Style	Low-Rise(1-4)
Status	Active

Community Information

Address	1104, 330 Clareview Station Drive Nw
Subdivision	Clareview Town Centre
City	Edmonton
County	Edmonton
Province	Alberta
Postal Code	T5Y 0E6

Amenities

Amenities	Parking, Visitor Parking, Elevator(s), Recreation Facilities
Parking Spaces	1
Parking	Stall

Interior

Interior Features	Kitchen Island, Laminate Counters, No Animal Home, Storage, Walk-In Closet(s)
Appliances	Dishwasher, Dryer, Electric Stove, Microwave Hood Fan, Refrigerator, Washer, Window Coverings
Heating	Baseboard, Natural Gas, Hot Water
Cooling	None
# of Stories	4
Basement	None

Exterior

Exterior Features	None
Roof	Asphalt Shingle
Construction	Vinyl Siding, Wood Frame, Stone
Foundation	Poured Concrete

Additional Information

Date Listed	February 13th, 2025
Days on Market	65
Zoning	RA8

Listing Details

Listing Office	Royal LePage Noralta
----------------	----------------------

Data is supplied by Pillar 9â„¢ MLSÂ® System. Pillar 9â„¢ is the owner of the copyright in its MLSÂ® System. Data is deemed reliable but is not guaranteed accurate by Pillar 9â„¢. The trademarks MLSÂ®, Multiple Listing ServiceÂ® and the associated logos are owned by The Canadian Real Estate Association (CREA) and identify the quality of services provided by real estate professionals who are members of CREA. Used under license.