

# \$108,000 - Lot 1, Willowside Estates, Rural Woodlands County

MLS® #A2198501

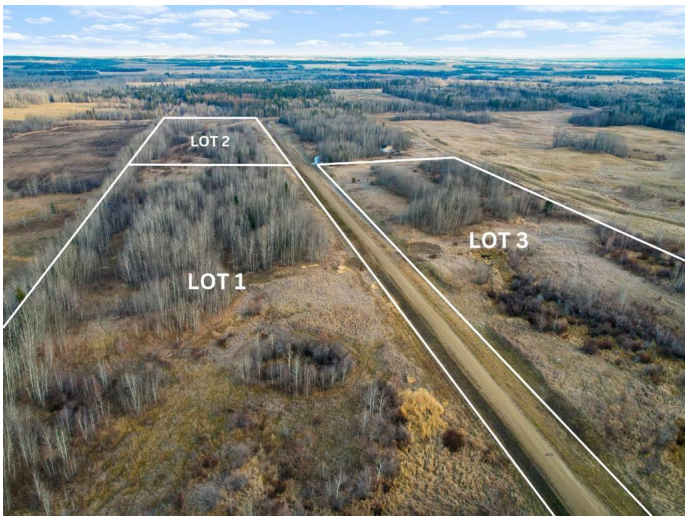
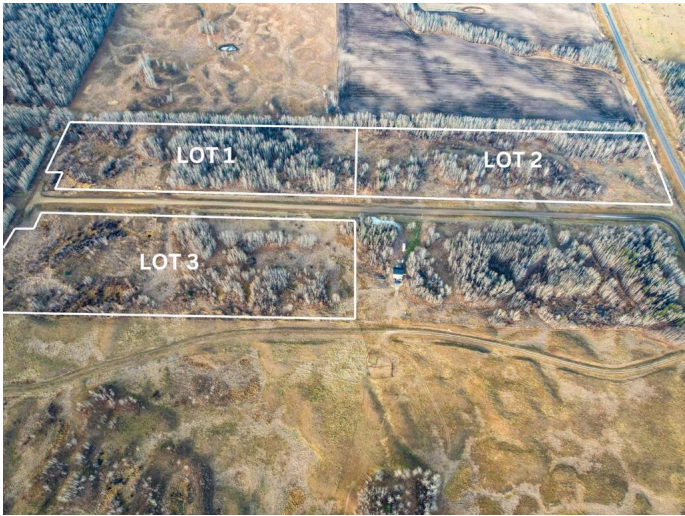
**\$108,000**

0 Bedroom, 0.00 Bathroom,  
Land on 13.00 Acres

NONE, Rural Woodlands County, Alberta

Land to Call Home. This beautiful natural piece of land is located in Willowside Estates, Woodlands County, situated between Whitecourt and Mayerthorpe. The property features rolling terrain with trees and an ideal building spot. There are no deadlines for construction, allowing you to enjoy this space as your private camp or retreat. The area is surrounded by farmland, providing a tranquil atmosphere.

Utilities such as power and gas are available in the subdivision, but you also have the option to go off-grid. Property taxes are under \$520 per year. Lot 1 offers a generous size of 13 acres.



## Essential Information

MLS® #	A2198501
Price	\$108,000
Bathrooms	0.00
Acres	13.00
Type	Land
Sub-Type	Residential Land
Status	Active

## Community Information

Address	Lot 1, Willowside Estates
Subdivision	NONE
City	Rural Woodlands County

County	Woodlands County
Province	Alberta
Postal Code	T0E 1N0

### **Additional Information**

Date Listed	March 2nd, 2025
Days on Market	47
Zoning	Agricultural

### **Listing Details**

Listing Office	ROYAL LEPAGE MODERN REALTY
----------------	----------------------------

Data is supplied by Pillar 9â„¢ MLS® System. Pillar 9â„¢ is the owner of the copyright in its MLS® System. Data is deemed reliable but is not guaranteed accurate by Pillar 9â„¢. The trademarks MLS®, Multiple Listing Service® and the associated logos are owned by The Canadian Real Estate Association (CREA) and identify the quality of services provided by real estate professionals who are members of CREA. Used under license.