

\$629,900 - 88 Malvern Crescent Ne, Calgary

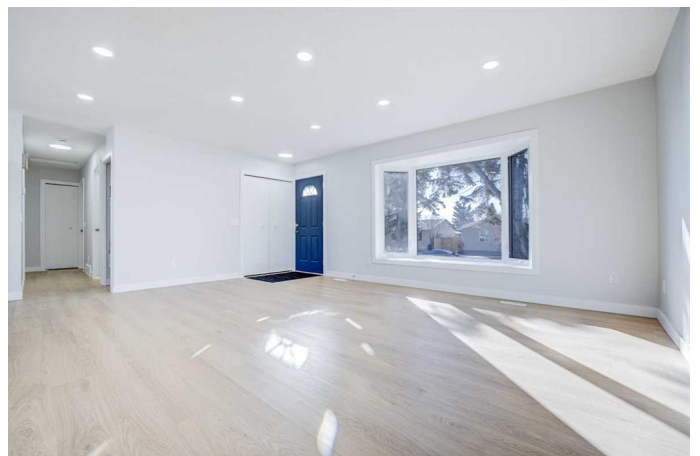
MLS® #A2198507

\$629,900

6 Bedroom, 4.00 Bathroom, 1,125 sqft
Residential on 0.12 Acres

Marlborough Park, Calgary, Alberta

| NEWLY RENOVATED | 6 BEDS | 3.5 BATHS
| SUITED | DOUBLE DETACHED GARAGE |
Newly renovated bungalow in Marlborough Park! This beautifully updated home features vinyl plank flooring and pot lights throughout, creating a welcoming and modern look. The main level is warm and inviting, with natural light coming in through large bay windows. The open-concept living space flows into the bright kitchen featuring quartz countertops with a matching island, stainless steel appliances, soft-close cabinetry, and a stylish marble-pattern backsplash. The main floor has its own washer/dryer and offers three bedrooms, including a primary with its own 2-piece ensuite,. An additional 4-piece bathroom completes this level. The lower level is just as impressive, offering a separate entrance, kitchen, and laundry. There are three additional bedroomsâ€”including a second primary bedroom with its own 4-piece ensuite. A 3-piece bathroom completes this level. Outside, enjoy the patio and spacious backyard, perfect for relaxing or entertaining. A double detached garage provides convenient parking. This home is located near schools, shopping, parks, and more! Call your favourite agent for a showing today!



Built in 1977

Essential Information

MLS® #

A2198507

Price	\$629,900
Bedrooms	6
Bathrooms	4.00
Full Baths	3
Half Baths	1
Square Footage	1,125
Acres	0.12
Year Built	1977
Type	Residential
Sub-Type	Detached
Style	Bungalow
Status	Active

Community Information

Address	88 Malvern Crescent Ne
Subdivision	Marlborough Park
City	Calgary
County	Calgary
Province	Alberta
Postal Code	T2A 5P4

Amenities

Parking Spaces	2
Parking	Double Garage Detached
# of Garages	2

Interior

Interior Features	See Remarks
Appliances	Dishwasher, Electric Stove, Refrigerator
Heating	Forced Air
Cooling	None
Has Basement	Yes
Basement	Exterior Entry, Finished, Full, Suite

Exterior

Exterior Features	Other
Lot Description	Back Lane, Back Yard
Roof	Asphalt Shingle
Construction	Wood Frame

Foundation Poured Concrete

Additional Information

Date Listed March 7th, 2025

Days on Market 5

Zoning R-CG

Listing Details

Listing Office eXp Realty

Data is supplied by Pillar 9â„¸ MLSÂ® System. Pillar 9â„¸ is the owner of the copyright in its MLSÂ® System. Data is deemed reliable but is not guaranteed accurate by Pillar 9â„¸. The trademarks MLSÂ®, Multiple Listing ServiceÂ® and the associated logos are owned by The Canadian Real Estate Association (CREA) and identify the quality of services provided by real estate professionals who are members of CREA. Used under license.