

# \$334,400 - 302, 2000 Citadel Meadow Point Nw, Calgary

MLS® #A2198605

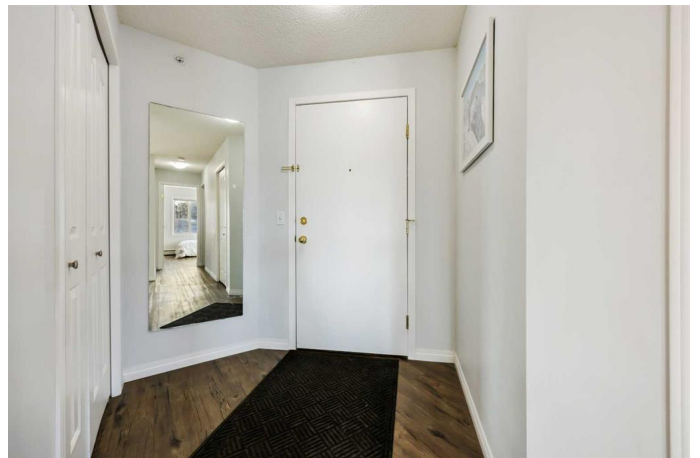
**\$334,400**

2 Bedroom, 2.00 Bathroom, 929 sqft

Residential on 0.00 Acres

Citadel, Calgary, Alberta

Welcome to Citadel Pointe, a secure and peaceful complex nestled in the family-friendly community of Citadel. This exceptional top-floor corner unit offers both comfort and style with 2 generously-sized bedrooms and 2 full bathrooms, making it the perfect space for those seeking extra room. As you step inside, you're greeted by a bright, open floor plan that welcomes an abundance of natural light streaming through multiple windows. The vinyl plank flooring flows seamlessly from the dining area to the well-appointed kitchen, which features newer stainless steel appliances and ample cabinet space, ideal for all your culinary needs. The kitchen opens up to a living room, complete with a cozy gas fireplace – the perfect spot to relax or entertain. The living room leads out to a private east-facing balcony that you can enjoy year round. The large primary bedroom features double closets with organizers and a 3-piece ensuite for added privacy and convenience. The second bedroom is equally spacious, making it a great option for guests or a home office. A 4-piece main bathroom, as well as the added bonus of in-suite laundry, complete this well-designed unit. This home also includes the added convenience of a titled underground parking stall, along with an assigned storage locker, ensuring plenty of space for all your belongings. Citadel Pointe is located just minutes from schools, public transportation, and a variety of local amenities. Enjoy the tranquility and close-knit atmosphere of the



Citadel community, with the added benefit of maintenance-free living in this beautifully maintained building.

Built in 2003

### **Essential Information**

MLS® #	A2198605
Price	\$334,400
Bedrooms	2
Bathrooms	2.00
Full Baths	2
Square Footage	929
Acres	0.00
Year Built	2003
Type	Residential
Sub-Type	Apartment
Style	Single Level Unit
Status	Active

### **Community Information**

Address	302, 2000 Citadel Meadow Point Nw
Subdivision	Citadel
City	Calgary
County	Calgary
Province	Alberta
Postal Code	T3G 5N5

### **Amenities**

Amenities	Elevator(s), Parking, Visitor Parking, Other
Parking Spaces	1
Parking	Parkade, Stall, Titled

### **Interior**

Interior Features	Kitchen Island, Laminate Counters, No Animal Home, No Smoking Home, Open Floorplan
Appliances	Dishwasher, Electric Stove, Microwave Hood Fan, Refrigerator, Window Coverings
Heating	Baseboard, Natural Gas

Cooling	None
Fireplace	Yes
# of Fireplaces	1
Fireplaces	Gas, Living Room
# of Stories	3

### **Exterior**

Exterior Features	Other
Roof	Asphalt Shingle
Construction	Stucco, Vinyl Siding, Wood Frame
Foundation	Poured Concrete

### **Additional Information**

Date Listed	March 4th, 2025
Days on Market	10
Zoning	M-C1

### **Listing Details**

Listing Office	Greater Property Group
----------------	------------------------

Data is supplied by Pillar 9â„¢ MLSÂ® System. Pillar 9â„¢ is the owner of the copyright in its MLSÂ® System. Data is deemed reliable but is not guaranteed accurate by Pillar 9â„¢. The trademarks MLSÂ®, Multiple Listing ServiceÂ® and the associated logos are owned by The Canadian Real Estate Association (CREA) and identify the quality of services provided by real estate professionals who are members of CREA. Used under license.