

# \$339,900 - 521 Park Drive, Rural Athabasca County

MLS® #A2198660

**\$339,900**

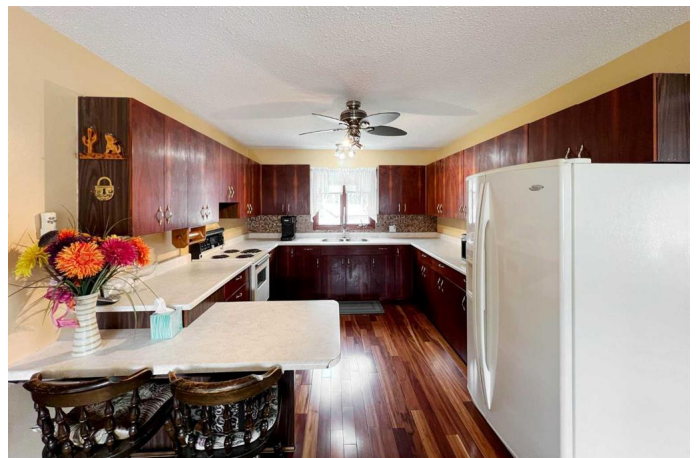
3 Bedroom, 2.00 Bathroom, 1,950 sqft  
Residential on 0.43 Acres

Bondiss, Rural Athabasca County, Alberta

Welcome to S.V OF BONDISS AT SKELETON LAKE!! This 4 season, 2 story home features gleaming hardwood floors, tons of natural lighting with big windows. The kitchen has tons of cabinets and counter space with a large separate dining area for the gathering of friends and family. The bright and very large living room has tons of windows and easy access to the wrap around deck plus main floor also features a 2 pc powder room and flex area with easy access to the large double attached heated garage (27x24). Upstairs boasts 3 large bedrooms and the primary has its own walk in closet, main 4pc bathroom and separate laundry area for convenience . Over 18000 SQ FT lot allows you to enjoy the back yard or the drive through driveway out front. The lake and public park is just a short walk from the home, with the golf course only 5 minutes away as well. Lake access without the huge lake front pricing. Skeleton Lake area is known for swimming, fishing, boating, quadding, golfing, biking, enjoying camp fires and making great memories. Located only 10km from Boyle, 1.5 hrs from Edmonton, 2.5 hrs from Fort McMurray. Don.t miss out on lake life- come check it out TODAY! SEPTIC TANK IS 1500 GAL, WATER SOURCE IS A BORED WELL

Built in 1985

## Essential Information



|                |             |
|----------------|-------------|
| MLS® #         | A2198660    |
| Price          | \$339,900   |
| Bedrooms       | 3           |
| Bathrooms      | 2.00        |
| Full Baths     | 1           |
| Half Baths     | 1           |
| Square Footage | 1,950       |
| Acres          | 0.43        |
| Year Built     | 1985        |
| Type           | Residential |
| Sub-Type       | Detached    |
| Style          | 2 Storey    |
| Status         | Active      |

### **Community Information**

|             |                        |
|-------------|------------------------|
| Address     | 521 Park Drive         |
| Subdivision | Bondiss                |
| City        | Rural Athabasca County |
| County      | Athabasca County       |
| Province    | Alberta                |
| Postal Code | T0A 0M0                |

### **Amenities**

|                |  |
|----------------|--|
| Parking Spaces | 6  |
| Parking        | Double Garage Attached, Driveway, Heated Garage, RV Access/Parking |
| # of Garages   | 2  |
| Waterfront     | Beach Access, Lake, Lake Privileges                                |

### **Interior**

|                   |  |
|-------------------|--|
| Interior Features | No Smoking Home, Vinyl Windows                         |
| Appliances        | Refrigerator, Stove(s), Washer/Dryer, Window Coverings |
| Heating           | Forced Air, Natural Gas                                |
| Cooling           | None   |
| Has Basement      | Yes  |
| Basement          | Crawl Space, None                                      |

### **Exterior**

|                   |                                      |
|-------------------|--------------------------------------|
| Exterior Features | Fire Pit                             |
| Lot Description   | Back Yard, Landscaped, Cleared, Lake |

|              |                            |
|--------------|----------------------------|
| Roof         | Asphalt Shingle            |
| Construction | Vinyl Siding, Wood Frame   |
| Foundation   | Poured Concrete, Piling(s) |

### **Additional Information**

|                |                  |
|----------------|------------------|
| Date Listed    | April 10th, 2025 |
| Days on Market | 11               |
| Zoning         | RES              |

### **Listing Details**

|                |                |
|----------------|----------------|
| Listing Office | RE/MAX Connect |
|----------------|----------------|

Data is supplied by Pillar 9â„¢ MLSÂ® System. Pillar 9â„¢ is the owner of the copyright in its MLSÂ® System. Data is deemed reliable but is not guaranteed accurate by Pillar 9â„¢. The trademarks MLSÂ®, Multiple Listing ServiceÂ® and the associated logos are owned by The Canadian Real Estate Association (CREA) and identify the quality of services provided by real estate professionals who are members of CREA. Used under license.