

# \$577,777 - 122 Spruce Road, Turtle Lake

MLS® #A2199815

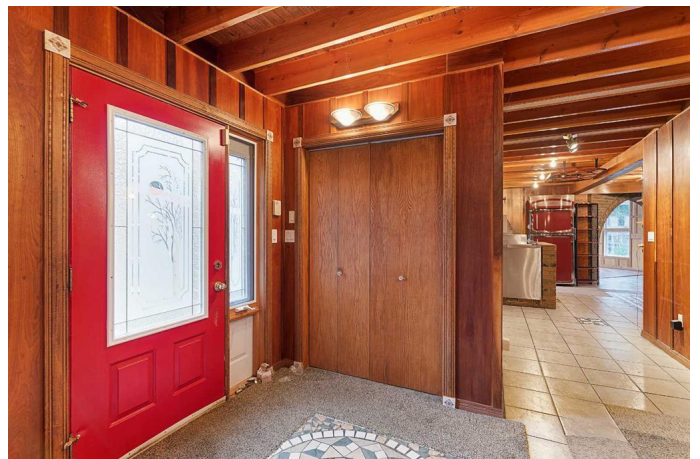
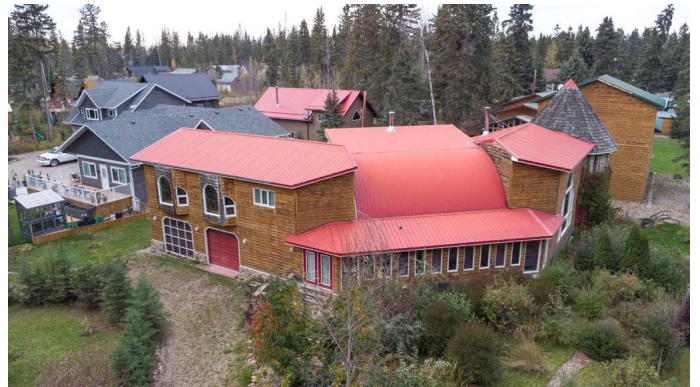
**\$577,777**

3 Bedroom, 3.00 Bathroom, 4,257 sqft  
Residential on 0.32 Acres

NONE, Turtle Lake, Saskatchewan

Nestled in the serene enclave of Powm Beach on Turtle Lake, this custom-built masterpiece spanning over 4000 sq. ft. is a year-round sanctuary awaiting your presence. Situated on a coveted corner lot, this architectural gem boasts exquisite craftsmanship and attention to detail. The residence features three spacious bedrooms and three bathrooms, all adorned with in-floor heating for ultimate comfort. The interior exudes warmth and sophistication with exceptional millwork enhancing every corner while abundant natural light dances through each room. Step outside into your private courtyard oasis where tranquility reigns supreme. Discover amenities that elevate everyday living to an art form – from a custom Forno oven for culinary delights to a charming greenhouse(16' x 40') beckoning you to nurture nature's beauty. Three guest sheds(10' x 10') offer additional space for creativity or relaxation. Unique in its design and unparalleled in it's allure, this lakeside haven promises an extraordinary lifestyle where luxury meets tranquility amidst the enchanting backdrop of Turtle Lake's pristine waters. Just a short walk to the beach in summer or enjoy ice fishing in winter. Don't miss out on exploring every detail through our immersive 3D virtual tour experience. This property is sold "as is, where is" without warranties or representations. Schedule "A" will form part of all offers.

Built in 2001



## Essential Information

MLS® #	A2199815
Price	\$577,777
Bedrooms	3
Bathrooms	3.00
Full Baths	2
Half Baths	1
Square Footage	4,257
Acres	0.32
Year Built	2001
Type	Residential
Sub-Type	Detached
Style	2 Storey
Status	Active

## Community Information

Address	122 Spruce Road
Subdivision	NONE
City	Turtle Lake
County	Saskatchewan
Province	Saskatchewan
Postal Code	S0M 2Y0

## Amenities

Parking Spaces	6
Parking	Double Garage Attached, Gravel Driveway, RV Access/Parking
# of Garages	2

## Interior

Interior Features	Ceiling Fan(s), High Ceilings, Open Floorplan, Storage, Sump Pump(s)
Appliances	None
Heating	In Floor, Hot Water, Natural Gas, Boiler
Cooling	None
Fireplace	Yes
# of Fireplaces	1
Fireplaces	Wood Burning
Has Basement	Yes
Basement	Crawl Space, None, Unfinished

## Exterior

Exterior Features	None
Lot Description	Corner Lot, Irregular Lot, Treed
Roof	Metal
Construction	Stone, Wood Frame, Log, Other
Foundation	Wood

### **Additional Information**

Date Listed	March 10th, 2025
Days on Market	3
Zoning	Residential

### **Listing Details**

Listing Office           CENTURY 21 DRIVE

Data is supplied by Pillar 9â„¢ MLSÂ® System. Pillar 9â„¢ is the owner of the copyright in its MLSÂ® System. Data is deemed reliable but is not guaranteed accurate by Pillar 9â„¢. The trademarks MLSÂ®, Multiple Listing ServiceÂ® and the associated logos are owned by The Canadian Real Estate Association (CREA) and identify the quality of services provided by real estate professionals who are members of CREA. Used under license.