

\$415,000 - 1024 21 Street S, Lethbridge

MLS® #A2200852

\$415,000

4 Bedroom, 3.00 Bathroom, 997 sqft
Residential on 0.14 Acres

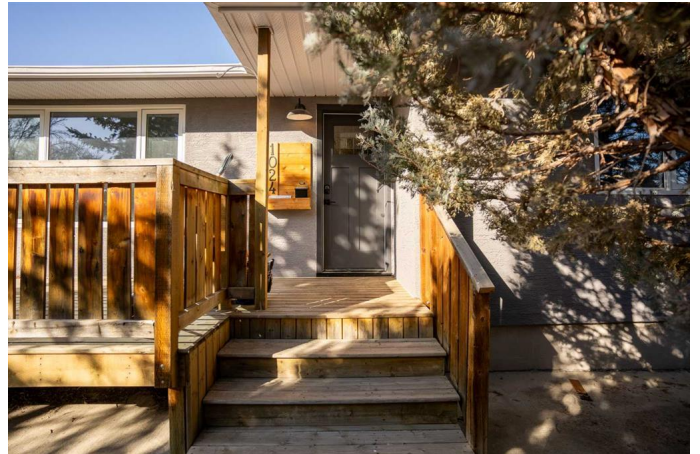
Victoria Park, Lethbridge, Alberta

Nestled in the highly sought-after Agnes Davidson neighborhood, this beautifully updated home offers an incredible opportunity for homeowners and investors alike. Location is everything, and this property is just steps away from the hospital, Henderson Park, and Gilbert Patterson Middle School, making it ideal for families, healthcare workers, or those seeking a vibrant and convenient lifestyle.

The main floor has been completely renovated, featuring new vinyl plank flooring throughout, fresh trim, modern doors, and a stunning new kitchen with upgraded quartz countertops, a sleek tiled backsplash, and brand-new stainless steel appliances. The space is bright, stylish, and move-in ready! Adding to the convenience, a brand-new washer and dryer have been installed for exclusive use by the main floor residents, ensuring complete separation from the downstairs suite.

The main bathroom is a showstopper, boasting glossy black tile, a new tub, a modern vanity, and upgraded light fixtures for a truly luxurious feel. The primary bedroom is spacious and features his-and-hers closets with stylish barn doors, adding a touch of charm. Both bedroom two and the dining area offer private deck access, providing a perfect spot to relax and enjoy the mature backyard.

The basement suite (illegal) is an excellent



mortgage helper, featuring two bedrooms, two full bathrooms, its own laundry setup, and a functional kitchen with a separate entrance. With ample space and privacy, itâ€™s a great option for extended family, guests, or potential rental income.

Outside, the backyard offers plenty of parking, including a detached extended single-car garage and three additional parking stalls at the rear of the property.

Built in 1955

Essential Information

MLS® #	A2200852
Price	\$415,000
Bedrooms	4
Bathrooms	3.00
Full Baths	3
Square Footage	997
Acres	0.14
Year Built	1955
Type	Residential
Sub-Type	Detached
Style	Bungalow
Status	Active

Community Information

Address	1024 21 Street S
Subdivision	Victoria Park
City	Lethbridge
County	Lethbridge
Province	Alberta
Postal Code	T1K 2H3

Amenities

Parking Spaces	5
Parking	On Street, Single Garage Detached
# of Garages	1

Interior

Interior Features	Quartz Counters, Separate Entrance, Vinyl Windows, Sump Pump(s)
Appliances	Dishwasher, Garage Control(s), Refrigerator, Stove(s), Washer/Dryer
Heating	Forced Air, Natural Gas
Cooling	None
Has Basement	Yes
Basement	Exterior Entry, Finished, Full, Suite

Exterior

Exterior Features	None
Lot Description	Back Lane, Back Yard, Landscaped, Many Trees
Roof	Asphalt Shingle
Construction	Stucco
Foundation	Poured Concrete

Additional Information

Date Listed	March 12th, 2025
Days on Market	2
Zoning	R-L

Listing Details

Listing Office	REAL BROKER
----------------	-------------

Data is supplied by Pillar 9â„¢ MLSÂ® System. Pillar 9â„¢ is the owner of the copyright in its MLSÂ® System. Data is deemed reliable but is not guaranteed accurate by Pillar 9â„¢. The trademarks MLSÂ®, Multiple Listing ServiceÂ® and the associated logos are owned by The Canadian Real Estate Association (CREA) and identify the quality of services provided by real estate professionals who are members of CREA. Used under license.