

\$399,900 - 5365 Southlands Drive Se, Medicine Hat

MLS® #A2201047

\$399,900

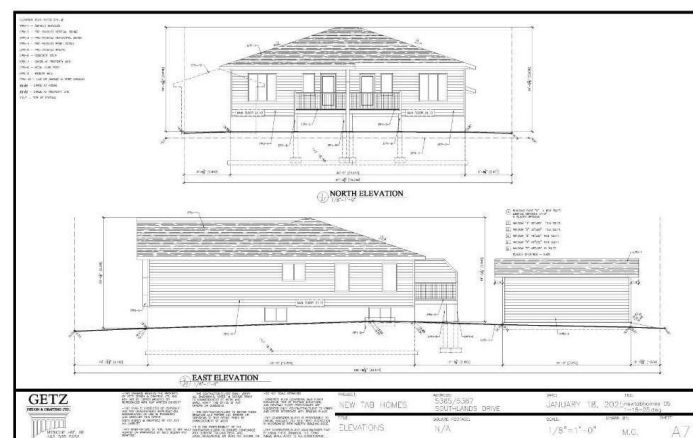
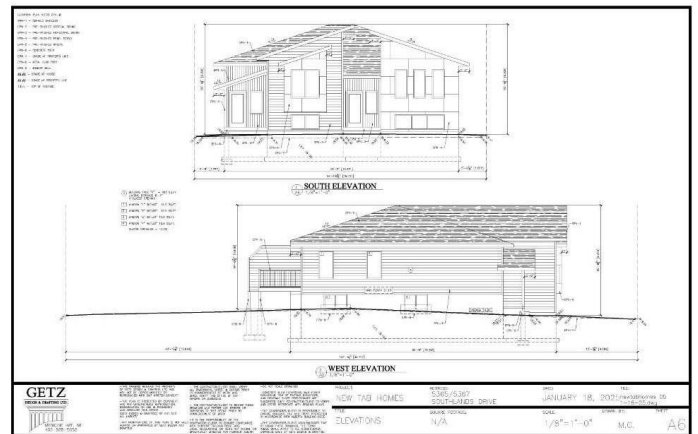
3 Bedroom, 3.00 Bathroom, 979 sqft
Residential on 0.13 Acres

Southland, Medicine Hat, Alberta

Welcome to this brand-new half duplex crafted by New Tab Homes Ltd and DP76 Construction, set for completion in July 2025, with the opportunity to customize your finishes.

Designed for modern living, this bright and spacious home features 3 bedrooms, 2.5 bathrooms, and an open-concept layout that maximizes natural light. The stylish kitchen boasts a central island and walk-in pantry, seamlessly connecting to the dining area and cozy living room. Step outside onto the spacious deck and envision your customizable backyard, perfect for entertaining or relaxing. The main floor includes a convenient 2-piece bathroom and a primary bedroom with a walk thru closet into the 3-piece ensuite.

Downstairs, the fully developed basement offers two additional bedrooms, a 4-piece bathroom, a laundry room, ample storage, and a generous family room. Ideally located near schools, shopping, and scenic walking paths, this home combines comfort, convenience, and quality craftsmanship. RMS square footage is based on builder plans and will be updated upon construction completion. Take this chance to add your own touches when buying this new home! **The photos depict a comparable construction project by New Tab Homes Ltd. and DP76 Construction located at 5342 Southlands Dr SE. While the floorplan shown may differ from the subject property, these images provide a clear representation of the builder's finished product**



Built in 2025

Essential Information

MLS® #	A2201047
Price	\$399,900
Bedrooms	3
Bathrooms	3.00
Full Baths	2
Half Baths	1
Square Footage	979
Acres	0.13
Year Built	2025
Type	Residential
Sub-Type	Semi Detached
Style	Side by Side, Bi-Level
Status	Active

Community Information

Address	5365 Southlands Drive Se
Subdivision	Southland
City	Medicine Hat
County	Medicine Hat
Province	Alberta
Postal Code	T1B 0G4

Amenities

Parking Spaces	1
Parking	None

Interior

Interior Features	Kitchen Island, Pantry, Walk-In Closet(s)
Appliances	Central Air Conditioner
Heating	Forced Air
Cooling	Central Air
Has Basement	Yes
Basement	Finished, Full

Exterior

Exterior Features	None
-------------------	------

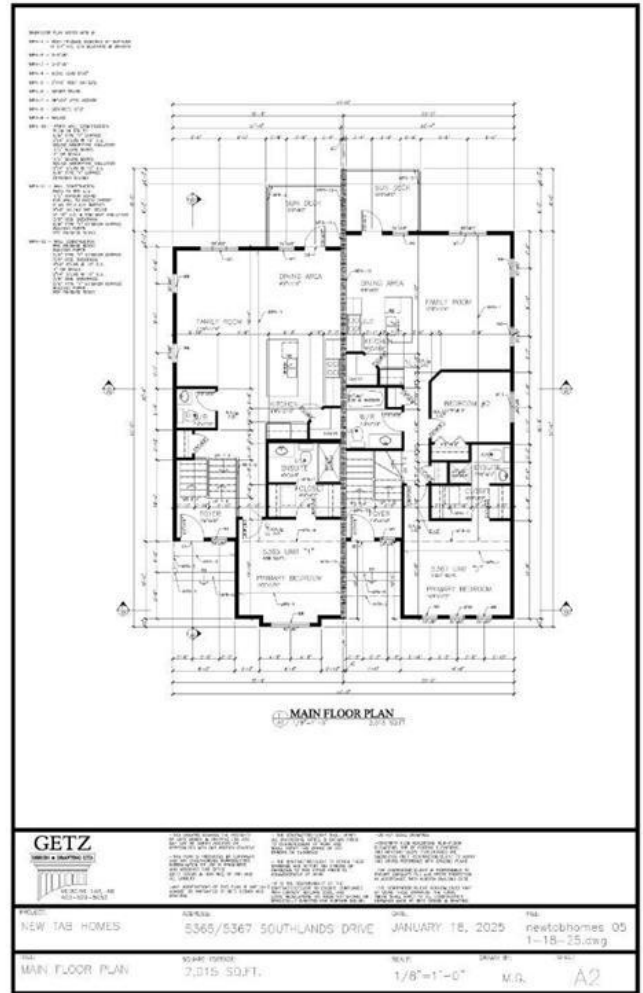
Lot Description Standard Shaped Lot
 Roof Asphalt Shingle
 Construction Vinyl Siding
 Foundation Poured Concrete

Additional Information

Date Listed March 10th, 2025
 Days on Market 27
 Zoning R-LD

Listing Details

Listing Office ROYAL LEPAGE COMMUNITY



GETZ <small>ARCHITECTURAL & ENGINEERING</small> <small>1000 16th Street SW, Calgary, Alberta T2M 4K6</small> <small>Phone: (403) 243-8888</small>			
PROJECT: NEW TAB HOMES	ADDRESS: 5365/5367 SOUTHLANDS DRIVE	DATE: JANUARY 18, 2025	FILE: newtohomes 05 1-18-25.dwg
TITLE: MAIN FLOOR PLAN	SQUARE FOOTAGE: 2,015 SQ.FT.	SCALE: 1/8"=1'-0"	DRAWN BY: M.G.

Data is supplied by Pillar 9â,,ç MLSÂ® System. Pillar 9â,,ç is the owner of the copyright in its MLSÂ® System. Data is deemed reliable but is not guaranteed accurate by Pillar 9â,,ç. The trademarks MLSÂ®, Multiple Listing ServiceÂ® and the associated logos are owned by The Canadian Real Estate Association (CREA) and identify the quality of services provided by real estate professionals who are members of CREA. Used under license.