

# \$559,000 - 1248 Berkley Drive Nw, Calgary

MLS® #A2201242

**\$559,000**

4 Bedroom, 2.00 Bathroom, 1,180 sqft  
Residential on 0.10 Acres

Beddington Heights, Calgary, Alberta

GREAT HOME!! OLDER BUT METICULOUSLY WELL CARED. NEWER HOT WATER TANK, NEWLY PAINTED , A COUPLE YEAR OLD WASHER AND DRYER. WELL MAINTAINED GLEAMING CHERRY HARDWOOD FLOORS AND STAIRS. BASEMENT HAS A GAME ROOM/MAN CAVE AND A GUEST ROOM. VERY CLOSE TO SCHOOLS, SHOPPING AND A COUPLE OF BLOCK AWAY WALK TO NOSEHILL PARK. MOVE IN READY.

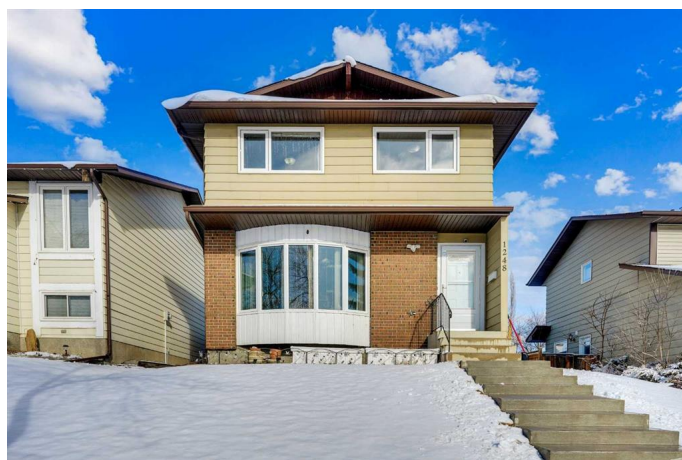
Built in 1980

## Essential Information

MLS® #	A2201242
Price	\$559,000
Bedrooms	4
Bathrooms	2.00
Full Baths	1
Half Baths	1
Square Footage	1,180
Acres	0.10
Year Built	1980
Type	Residential
Sub-Type	Detached
Style	2 Storey
Status	Active

## Community Information

Address 1248 Berkley Drive Nw



Subdivision	Beddington Heights
City	Calgary
County	Calgary
Province	Alberta
Postal Code	T3K1S9

### **Amenities**

Parking Spaces	2
Parking	Alley Access, On Street, Carport

### **Interior**

Interior Features	No Animal Home, No Smoking Home
Appliances	Dishwasher, Dryer, Electric Stove, Range Hood, Refrigerator, Washer
Heating	Forced Air, Natural Gas
Cooling	Other
Has Basement	Yes
Basement	Full, Partially Finished

### **Exterior**

Exterior Features	Garden
Lot Description	Rectangular Lot
Roof	Asphalt Shingle
Construction	Brick
Foundation	Poured Concrete

### **Additional Information**

Date Listed	March 12th, 2025
Days on Market	2
Zoning	R-CG

### **Listing Details**

Listing Office	Real Estate Professionals Inc.
----------------	--------------------------------

Data is supplied by Pillar 9â„¢ MLSÂ® System. Pillar 9â„¢ is the owner of the copyright in its MLSÂ® System. Data is deemed reliable but is not guaranteed accurate by Pillar 9â„¢. The trademarks MLSÂ®, Multiple Listing ServiceÂ® and the associated logos are owned by The Canadian Real Estate Association (CREA) and identify the quality of services provided by real estate professionals who are members of CREA. Used under license.