

\$775,000 - 401 Castle Mountain Way, Rural Pincher Creek No. 9, M.D. of

MLS® #A2202935

\$775,000

4 Bedroom, 2.00 Bathroom, 1,165 sqft
Residential on 0.09 Acres

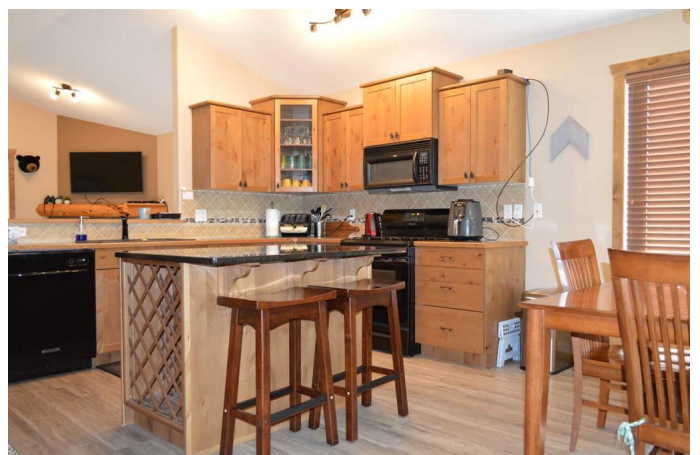
Castle Mountain Resort, Rural Pincher Creek
No. 9, M.D. of, Alberta

Yes, this is a little piece of Heaven!! Castle Mountain Resort has so much to offer in winter and lots to do in the other seasons. This property is well set up to hold many people with a lock off, illegal suite in the basement. The property is conveniently located as you enter the resort parking lot and is one of the very few that has a garage big enough for your vehicle and your stuff! This open plan layout has lots of space for entertaining with 2 gas fireplaces. There are great views from the front of the house and the back deck. The basement patio is concrete and private for you or your guests. This property is ready for the ski season. Seller is willing to sell property furnished. Book a viewing with your favourite REALTOR® today!

Built in 2006

Essential Information

MLS® #	A2202935
Price	\$775,000
Bedrooms	4
Bathrooms	2.00
Full Baths	2
Square Footage	1,165
Acres	0.09
Year Built	2006



Type	Residential
Sub-Type	Row/Townhouse
Style	Modified Bi-Level
Status	Active

Community Information

Address	401 Castle Mountain Way
Subdivision	Castle Mountain Resort
City	Rural Pincher Creek No. 9, M.D. of
County	Pincher Creek No. 9, M.D. of
Province	Alberta
Postal Code	T0K 1W0

Amenities

Parking Spaces	2
Parking	Single Garage Attached
# of Garages	1

Interior

Interior Features	Open Floorplan, Separate Entrance
Appliances	Dishwasher, Electric Stove, Refrigerator, See Remarks, Stove(s), Washer/Dryer
Heating	Fireplace(s), Forced Air
Cooling	None
Fireplace	Yes
# of Fireplaces	2
Fireplaces	Gas
Has Basement	Yes
Basement	Exterior Entry, Finished, Full, Suite

Exterior

Exterior Features	Other
Lot Description	Views
Roof	Asphalt Shingle
Construction	Wood Frame
Foundation	Poured Concrete

Additional Information

Date Listed	March 16th, 2025
-------------	------------------

Days on Market 25
Zoning CMR

Listing Details

Listing Office Royal LePage South Country - Lethbridge

Data is supplied by Pillar 9â,,ç MLSÂ® System. Pillar 9â,,ç is the owner of the copyright in its MLSÂ® System. Data is deemed reliable but is not guaranteed accurate by Pillar 9â,,ç. The trademarks MLSÂ®, Multiple Listing ServiceÂ® and the associated logos are owned by The Canadian Real Estate Association (CREA) and identify the quality of services provided by real estate professionals who are members of CREA. Used under license.