

\$225,000 - 32068 Old Smith Highway, Rural Lesser Slave River No. 124, M.D. of

MLS® #A2203249

\$225,000

0 Bedroom, 0.00 Bathroom,
Land on 22.16 Acres

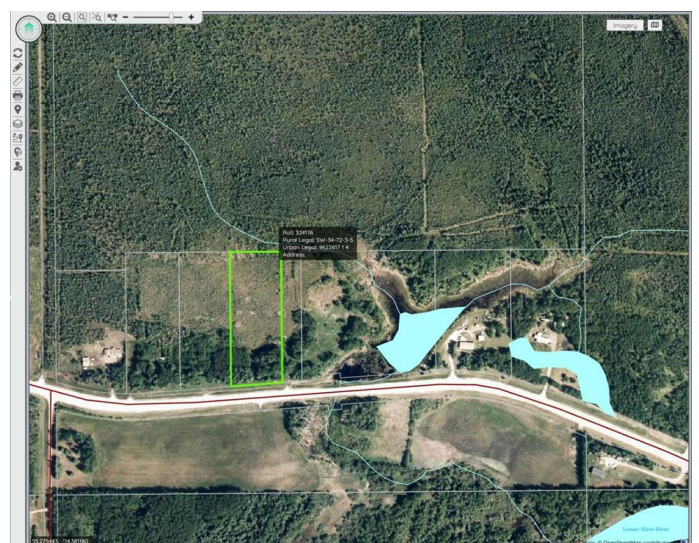
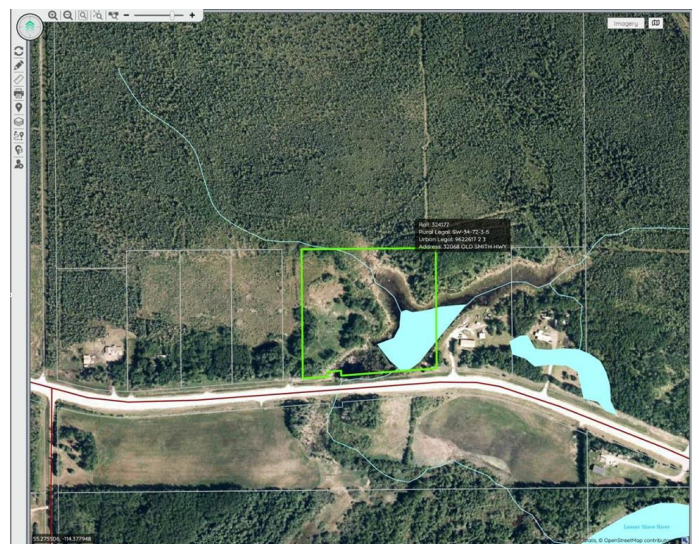
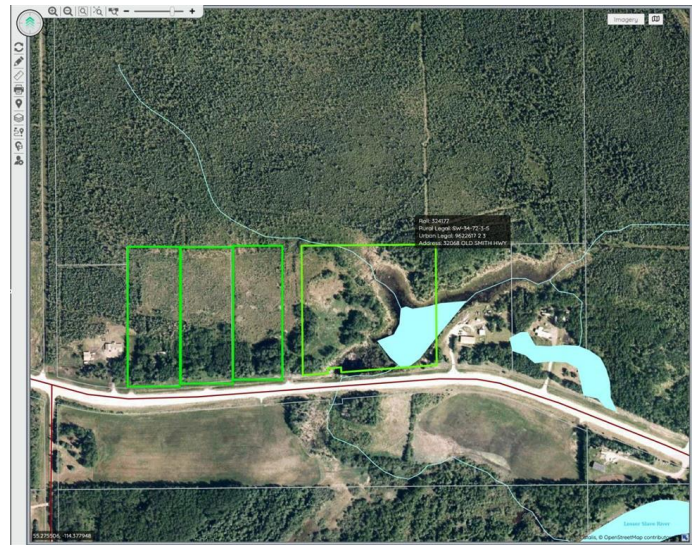
NONE, Rural Lesser Slave River No. 124,
M.D. of, Alberta

Prime Investment Opportunity: 4 Adjacent
Parcels on OLD SMITH HWY â€“ Sold as a
Package

Unlock the potential of this exceptional
opportunity, four contiguous parcels totalling
22.16 acres, offering endless possibilities for
development, investment, or private use. Enjoy
prime hunting, fishing, and quadding, with the
Lesser Slave and Moose Rivers just moments
away, an outdoor enthusiastâ€™s paradise.
Conveniently located near the Mistue Industrial
Park, the Hamlet of Smith, and all the
amenities of Slave Lake. Whether you're a
developer seeking your next project, an
investor looking for a lucrative opportunity, or a
buyer dreaming of owning a vast piece of land,
this rare 4-parcel package is a valuable asset
in a growing area. Opportunities like this
donâ€™t last longâ€”act now!

Essential Information

MLS® #	A2203249
Price	\$225,000
Bathrooms	0.00
Acres	22.16
Type	Land
Sub-Type	Residential Land
Status	Active



Community Information

Address	32068 Old Smith Highway
Subdivision	NONE
City	Rural Lesser Slave River No. 124, M.D. of
County	Lesser Slave River No. 124, M.D. of
Province	Alberta
Postal Code	T0G 2A4

Amenities

Utilities	Electricity Available
-----------	-----------------------

Exterior

Lot Description	Rectangular Lot, Meadow, Square Shaped Lot, Subdivided, Wooded
-----------------	--

Additional Information

Date Listed	March 20th, 2025
Days on Market	30
Zoning	RUS

Listing Details

Listing Office	eXp REALTY
----------------	------------

Data is supplied by Pillar 9â„¢ MLS® System. Pillar 9â„¢ is the owner of the copyright in its MLS® System. Data is deemed reliable but is not guaranteed accurate by Pillar 9â„¢. The trademarks MLS®, Multiple Listing Service® and the associated logos are owned by The Canadian Real Estate Association (CREA) and identify the quality of services provided by real estate professionals who are members of CREA. Used under license.