

\$249,000 - 302, 638 Meredith Road Ne, Calgary

MLS® #A2204740

\$249,000

2 Bedroom, 1.00 Bathroom, 828 sqft

Residential on 0.00 Acres

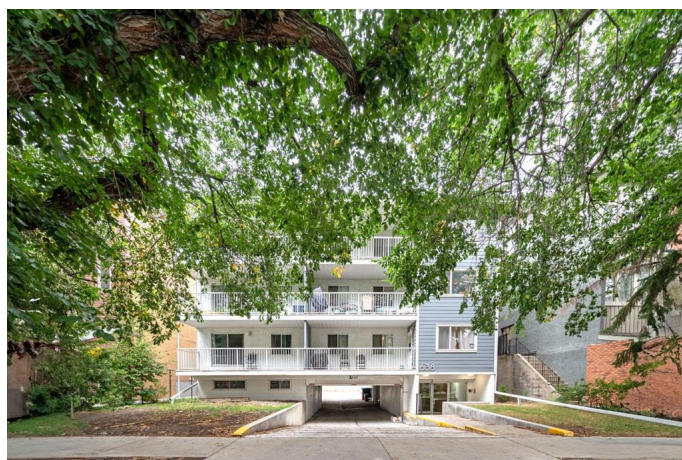
Bridgeland/Riverside, Calgary, Alberta

Absolutely Fabulous Location!!! Spacious 2-bedroom condo right in the buzzing heart of Bridgeland. Stroll to downtown, East Village, the Bow River Pathway, C-Train, and all the hip amenities that trendy Bridgeland has to offer! This top-floor gem checks all the boxes: two roomy bedrooms, a fabulous 4-piece bath, an open-concept kitchen, dining & living area, plus in-suite laundry featuring a shiny new LG washer/dryer combo. But wait, there's more! a huge balcony and your very own assigned COVERED parking spot! Brand new carpets, and professionally cleaned! This beauty is all set and waiting for its new lucky owners!

Built in 1978

Essential Information

MLS® #	A2204740
Price	\$249,000
Bedrooms	2
Bathrooms	1.00
Full Baths	1
Square Footage	828
Acres	0.00
Year Built	1978
Type	Residential
Sub-Type	Apartment
Style	Single Level Unit
Status	Active



Community Information

Address	302, 638 Meredith Road Ne
Subdivision	Bridgeland/Riverside
City	Calgary
County	Calgary
Province	Alberta
Postal Code	T2E 5A8

Amenities

Amenities	Parking
Parking Spaces	1
Parking	Covered, Stall

Interior

Interior Features	French Door, Storage, Vinyl Windows
Appliances	Dishwasher, Electric Stove, Refrigerator, Washer/Dryer, Window Coverings
Heating	Baseboard, Hot Water, Natural Gas
Cooling	None
# of Stories	4

Exterior

Exterior Features	Balcony
Construction	Stucco, Wood Siding

Additional Information

Date Listed	March 22nd, 2025
Days on Market	29
Zoning	M-C2

Listing Details

Listing Office	Century 21 Masters
----------------	--------------------

Data is supplied by Pillar 9â„¢ MLS® System. Pillar 9â„¢ is the owner of the copyright in its MLS® System. Data is deemed reliable but is not guaranteed accurate by Pillar 9â„¢. The trademarks MLS®, Multiple Listing Service® and the associated logos are owned by The Canadian Real Estate Association (CREA) and identify the quality of services provided by real estate professionals who are members of CREA. Used under license.