

\$575,000 - 123, 102 Scenic Drive N, Lethbridge

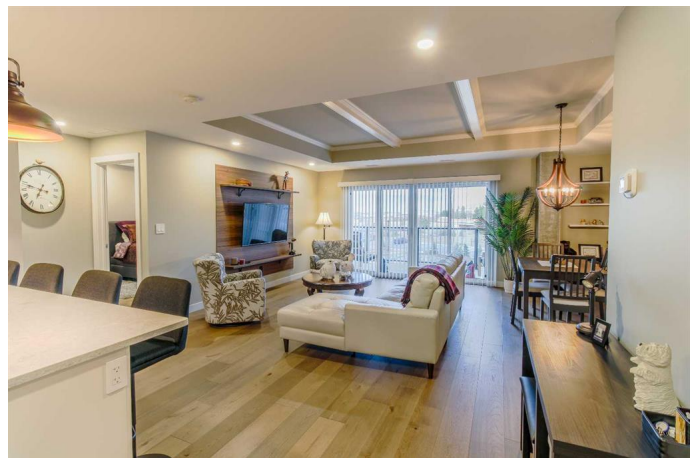
MLS® #A2205233

\$575,000

2 Bedroom, 2.00 Bathroom, 1,100 sqft
Residential on 0.00 Acres

River Valley - North, Lethbridge, Alberta

Welcome to Unit #123 at 102 Scenic Dr N â€” The "Lautner". This charming first-level residence offering a comfortable and convenient living experience. This thoughtfully designed unit features two spacious bedrooms and two well-appointed bathrooms, providing ample space for relaxation and everyday living. Upon entering, you are greeted by many additions including a welcoming living room that flows seamlessly into the dining area, creating an open and inviting atmosphere. The kitchen is designed for both functionality and style, featuring newly installed cabinets that enhance storage and aesthetics. Adjacent to the main living spaces, the updated laundry area adds modern convenience to daily routines. The unit's layout is both practical and comfortable, catering to a variety of lifestyle needs. A private balcony extends the living space outdoors, offering a picturesque view that adds to the charm of this home. Whether enjoying a quiet morning coffee or unwinding after a long day, the balcony serves as a perfect retreat. Located in a desirable area, this property provides easy access to local amenities, parks, and transportation options, making it an excellent choice for those seeking both comfort and convenience. Residents of 102 Scenic Drive N enjoy access to an array of amenities, including a yoga studio, full gym, wine storage and tasting room, golf simulator, workshop, culinary studio, sunroom, theatre, outdoor courtyard, and a future indoor pool. Car enthusiasts will appreciate the car club



area, designed with convenience in mind.
Don't miss the opportunity to make this
beautiful home yours.

Built in 2024

Essential Information

MLS® #	A2205233
Price	\$575,000
Bedrooms	2
Bathrooms	2.00
Full Baths	2
Square Footage	1,100
Acres	0.00
Year Built	2024
Type	Residential
Sub-Type	Apartment
Style	Single Level Unit
Status	Active

Community Information

Address	123, 102 Scenic Drive N
Subdivision	River Valley - North
City	Lethbridge
County	Lethbridge
Province	Alberta
Postal Code	T1H 5L9

Amenities

Amenities	Bicycle Storage, Car Wash, Clubhouse, Community Gardens, Elevator(s), Fitness Center, Game Court Interior, Parking, Party Room, Recreation Facilities, Recreation Room, Sauna, Secured Parking, Snow Removal, Storage, Trash, Visitor Parking, Workshop
Parking Spaces	1
Parking	Stall

Interior

Interior Features	No Animal Home, No Smoking Home, Open Floorplan, Storage, Walk-In Closet(s)
-------------------	---

Appliances	Dishwasher, Dryer, Microwave, Refrigerator, Stove(s), Washer, Window Coverings
Heating	Hot Water
Cooling	Central Air
# of Stories	6

Exterior

Exterior Features	Courtyard
Construction	Concrete

Additional Information

Date Listed	March 25th, 2025
Days on Market	6
Zoning	C-D

Listing Details

Listing Office	Onyx Realty Ltd.
----------------	------------------

Data is supplied by Pillar 9â„¢ MLSÂ® System. Pillar 9â„¢ is the owner of the copyright in its MLSÂ® System. Data is deemed reliable but is not guaranteed accurate by Pillar 9â„¢. The trademarks MLSÂ®, Multiple Listing ServiceÂ® and the associated logos are owned by The Canadian Real Estate Association (CREA) and identify the quality of services provided by real estate professionals who are members of CREA. Used under license.