

# \$69,900 - Pt Ne-22-73-12-w6, Rural Grande Prairie No. 1, County of

---

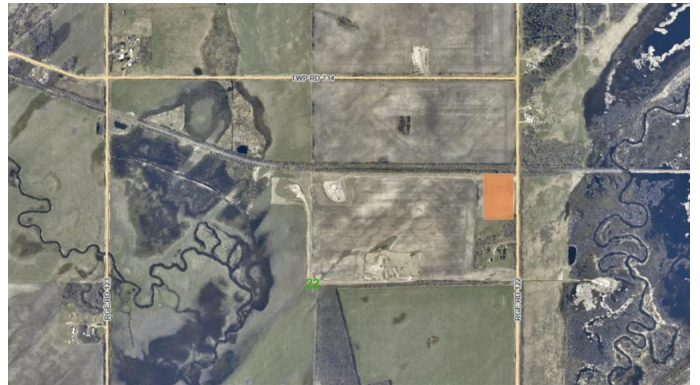
MLS® #A2207418

**\$69,900**

0 Bedroom, 0.00 Bathroom,  
Land on 5.96 Acres

NONE, Rural Grande Prairie No. 1, County of,  
Alberta

5.96 acres. 1.7 miles off pavement near  
Lymburn designated residential vacant land.  
Subdivision has been approved and is close to  
completion. 6-7 miles from unlimited crown  
land!



## Essential Information

MLS® #	A2207418
Price	\$69,900
Bathrooms	0.00
Acres	5.96
Type	Land
Sub-Type	Residential Land
Status	Active

## Community Information

Address	Pt Ne-22-73-12-w6
Subdivision	NONE
City	Rural Grande Prairie No. 1, County of
County	Grande Prairie No. 1, County of
Province	Alberta
Postal Code	T0H 2C0

## Additional Information

Date Listed	March 31st, 2025
Days on Market	28
Zoning	CR-5

**Listing Details**

Listing Office                RE/MAX Grande Prairie

Data is supplied by Pillar 9â„¢ MLS® System. Pillar 9â„¢ is the owner of the copyright in its MLS® System. Data is deemed reliable but is not guaranteed accurate by Pillar 9â„¢. The trademarks MLS®, Multiple Listing Service® and the associated logos are owned by The Canadian Real Estate Association (CREA) and identify the quality of services provided by real estate professionals who are members of CREA. Used under license.