

\$429,900 - 8822 104 Avenue, Grande Prairie

MLS® #A2208867

\$429,900

5 Bedroom, 2.00 Bathroom, 1,128 sqft
Residential on 0.14 Acres

Crystal Heights., Grande Prairie, Alberta

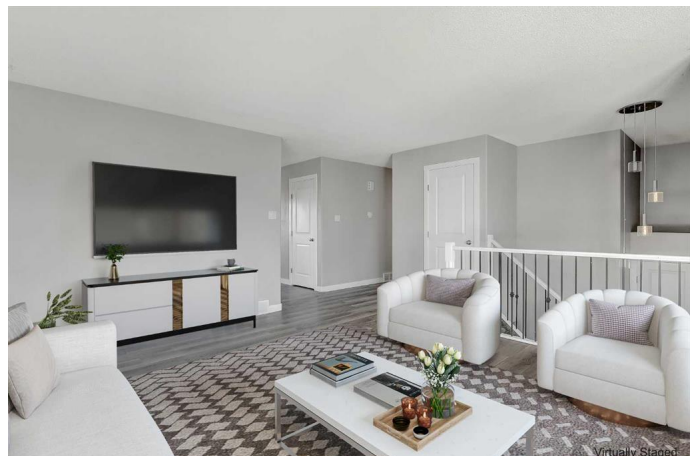
In today's competitive market, finding a spacious, move-in ready family home at this price is a rare opportunity. This charming 5-bedroom, 2-bathroom home in Crystal Heights is perfect for families looking for comfort, convenience, and value.

Recent updates, including vinyl flooring, modern fixtures, new interior doors, and BRAND-NEW STAINLESS STEEL kitchen appliances, make this home a standout. The newer deck, hot water tank, and roof give you peace of mind knowing that major updates have been taken care of.

The main floor is filled with natural light, thanks to a large south-facing window. The spacious eat-in kitchen features plenty of cupboard space, a pantry, and direct access to the back deck and yard—ideal for family gatherings and outdoor play. The primary bedroom and two additional bedrooms are conveniently located on the main floor, along with a full 4-piece bathroom.

Downstairs, you'll find two generous-sized bedrooms, another 4-piece bathroom with a tiled tub/shower, and a large family room with a wet bar—perfect for movie nights or entertaining guests. The basement also includes a laundry room for added convenience.

The fully fenced backyard backs onto a



grassed easement, offering privacy and a safe space for kids and pets to play. The attached double car garage provides easy access to the home, and thereâ€™s also a shed for all your gardening supplies.

Location is key: Youâ€™re just minutes from schools, walking trails, stores, and a main transit route, making this home ideal for families on the go.

With low inventory in todayâ€™s market, this home wonâ€™t last long. Call your favorite realtor today to schedule a viewing!

Built in 1997

Essential Information

MLS® #	A2208867
Price	\$429,900
Bedrooms	5
Bathrooms	2.00
Full Baths	2
Square Footage	1,128
Acres	0.14
Year Built	1997
Type	Residential
Sub-Type	Detached
Style	Bi-Level
Status	Active

Community Information

Address	8822 104 Avenue
Subdivision	Crystal Heights.
City	Grande Prairie
County	Grande Prairie
Province	Alberta
Postal Code	T8X1L7

Amenities

Parking Spaces	4
Parking	Concrete Driveway, Double Garage Attached
# of Garages	2

Interior

Interior Features	See Remarks
Appliances	Dishwasher, Electric Stove, Range Hood, Refrigerator, Washer/Dryer
Heating	Forced Air
Cooling	None
Has Basement	Yes
Basement	Finished, Full

Exterior

Exterior Features	None
Lot Description	Back Yard, Few Trees, Front Yard, Gentle Sloping, Landscaped, Lawn
Roof	Asphalt Shingle
Construction	Vinyl Siding
Foundation	Poured Concrete

Additional Information

Date Listed	April 4th, 2025
Days on Market	1
Zoning	RG

Listing Details

Listing Office	Century 21 Grande Prairie Realty Inc.
----------------	---------------------------------------

Data is supplied by Pillar 9â„¢ MLSÂ® System. Pillar 9â„¢ is the owner of the copyright in its MLSÂ® System. Data is deemed reliable but is not guaranteed accurate by Pillar 9â„¢. The trademarks MLSÂ®, Multiple Listing ServiceÂ® and the associated logos are owned by The Canadian Real Estate Association (CREA) and identify the quality of services provided by real estate professionals who are members of CREA. Used under license.