

# \$1,900 - 8804 96 Avenue, Grande Prairie

MLS® #A2209839

**\$1,900**

3 Bedroom, 2.00 Bathroom, 1,131 sqft  
Rental on 0.00 Acres

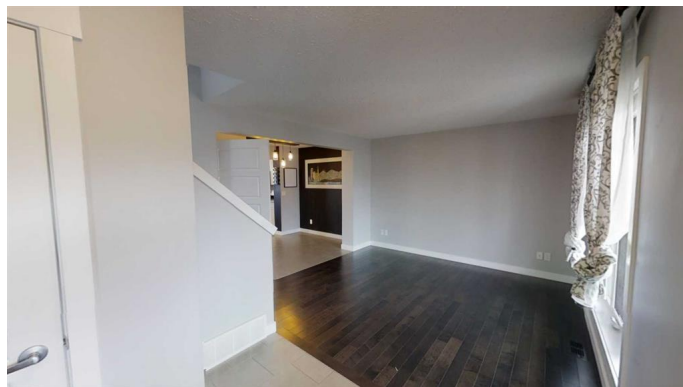
Cobblestone., Grande Prairie, Alberta

3 bed 1.5 bath full townhouse in Cobblestone!  
Living room off front entry. Separate dining area with chalk wall and custom light fixtures. Full kitchen with dishwasher, stainless appliances, and range hood microwave. Convenient half bath on main level off the kitchen, next to the rear entrance!  
Rear entrance through FENCED back yard. Unfinished basement makes for great heated storage.

Primary bedroom upstairs with large walk in closet. 2 other bedrooms and full 4 piece bath upstairs.

\*1 pet considered with a \$50 pet fee per month!\*

Application required prior to viewing.



## Essential Information

MLS® #	A2209839
Price	\$1,900
Bedrooms	3
Bathrooms	2.00
Full Baths	1
Half Baths	1
Square Footage	1,131
Acres	0.00
Type	Rental
Status	Active

## Community Information

Address	8804 96 Avenue
Subdivision	Cobblestone.
City	Grande Prairie
County	Grande Prairie
Province	Alberta
Postal Code	T8X0H2

### **Amenities**

Parking	Parking Pad
---------	-------------

### **Interior**

Appliances	Dishwasher, Microwave Hood Fan, Oven, Refrigerator, Stove(s), Washer/Dryer
------------	--

### **Exterior**

Roof	Asphalt Shingle
------	-----------------

### **Additional Information**

Date Listed	April 8th, 2025
-------------	-----------------

Days on Market	12
----------------	----

### **Listing Details**

Listing Office	Grassroots Realty Group Ltd.
----------------	------------------------------

Data is supplied by Pillar 9â„¢ MLSÂ® System. Pillar 9â„¢ is the owner of the copyright in its MLSÂ® System. Data is deemed reliable but is not guaranteed accurate by Pillar 9â„¢. The trademarks MLSÂ®, Multiple Listing ServiceÂ® and the associated logos are owned by The Canadian Real Estate Association (CREA) and identify the quality of services provided by real estate professionals who are members of CREA. Used under license.