

\$59,995 - 63 Manor Park Crescent E, Brooks

MLS® #A2210742

\$59,995

3 Bedroom, 1.00 Bathroom, 1,000 sqft
Mobile on 0.00 Acres

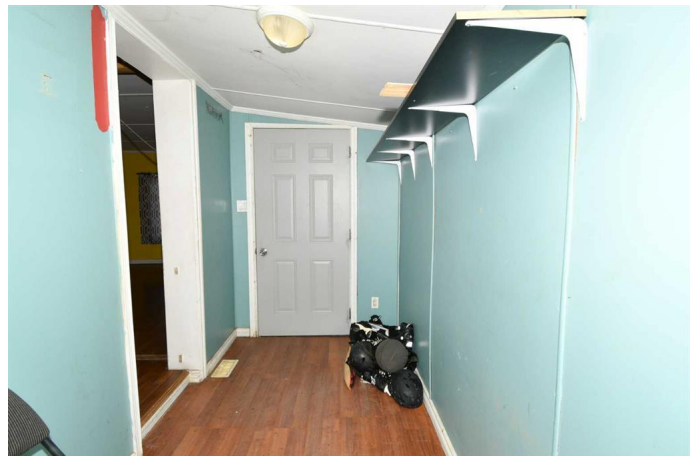
NONE, Brooks, Alberta

This cozy mobile home offers affordable living with 1017 square feet of functional space. Inside, you'll find three bedrooms and one bathroom, perfect for simple living. Practical features include a durable metal roof for low maintenance and two storage sheds for extra space. Enjoy off-street parking and a fully fenced yard, ideal for pets or relaxation. The location is a nature lover's dream, with a nearby walking path and green space. Plus, amenities like a liquor store, restaurants, and a convenience store are close by, making daily tasks easy. With its 1967 charm, this home provides comfortable, budget-friendly living with a mix of practicality and convenience.

Built in 1967

Essential Information

MLS® #	A2210742
Price	\$59,995
Bedrooms	3
Bathrooms	1.00
Full Baths	1
Square Footage	1,000
Acres	0.00
Year Built	1967
Type	Mobile
Sub-Type	Mobile
Style	Single Wide Mobile Home
Status	Active



Community Information

Address	63 Manor Park Crescent E
Subdivision	NONE
City	Brooks
County	Brooks
Province	Alberta
Postal Code	T1R 0P5

Amenities

Parking Spaces	2
Parking	Off Street, Asphalt

Interior

Appliances	Dishwasher, Dryer, Freezer, Refrigerator, Wall/Window Air Conditioner, Electric Oven
Heating	Forced Air

Exterior

Roof	Metal
Construction	Vinyl Siding, Wood Frame, Metal Frame
Foundation	Pillar/Post/Pier

Additional Information

Date Listed	April 16th, 2025
Days on Market	4

Listing Details

Listing Office	MaxWell Capital Realty - Brooks
----------------	---------------------------------

Data is supplied by Pillar 9â„¢ MLS® System. Pillar 9â„¢ is the owner of the copyright in its MLS® System. Data is deemed reliable but is not guaranteed accurate by Pillar 9â„¢. The trademarks MLS®, Multiple Listing Service® and the associated logos are owned by The Canadian Real Estate Association (CREA) and identify the quality of services provided by real estate professionals who are members of CREA. Used under license.