

\$1,050,000 - 35 Discovery Ridge Lane Sw, Calgary

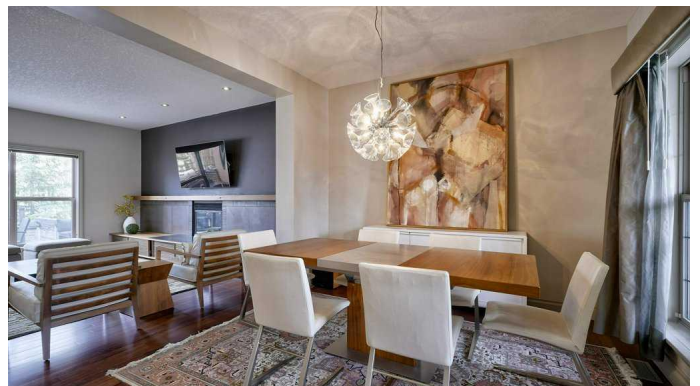
MLS® #A2214025

\$1,050,000

5 Bedroom, 4.00 Bathroom, 2,227 sqft
Residential on 0.14 Acres

Discovery Ridge, Calgary, Alberta

Beautifully updated 2-storey home in the desirable community of Discovery Ridge. This fully developed property offers over 3,100 sq ft of living space, featuring a bright open floor plan, modern finishes, and thoughtful renovations throughout. From the moment you enter, you'll be impressed by the light-filled, open-concept living spaces designed for both everyday living and entertaining. The updated kitchen is the centerpiece of the main level, with contemporary cabinetry, quartz countertops, a large island, Butlers pantry, and stainless steel appliances. It flows seamlessly into the breakfast nook, living room and large formal dining area. You can cozy up by the fireplace or enjoy gatherings with family and friends in this bright, inviting space. A great mud room off the insulated double garage and powder room are added convenience. Upstairs, you'll find 3 spacious bedrooms, including a generous primary suite with a renovated 5 piece ensuite, soaker tub, double vanity, relaxing sitting area and walk-in closet. The luxuriously updated bathrooms feature contemporary finishes, spa-like touches, and thoughtful design, while the upstairs laundry room is a delight. Downstairs, the fully finished basement offers two additional bedrooms—perfect for guests, a home office, or gym, 4 piece bathroom and an expansive family room centered around a modern fireplace, plus in-floor heating for added comfort year-round. Step outside to your



private backyard oasis featuring a massive deck, ideal for summer BBQs, lounging, or soaking in the hot tub under the stars. Nestled at the quiet end of the street and just steps from the scenic trails of Griffith Woods Park, this exceptional location offers unbeatable access to nature and recreation. Directly across from a vibrant community park, you'll find tennis courts, a playground, pickleball courts, an ice rink, and soccer fields—all just outside your door. Enjoy a short walk to nearby shops, cafés, and essential services, with top-rated schools only minutes away. Commuting is a breeze with quick access to both Glenmore and Stoney Trail, connecting you effortlessly to the rest of the city. Don't miss your chance to own this exceptional property in Discovery Ridge.

Built in 2002

Essential Information

MLS® #	A2214025
Price	\$1,050,000
Bedrooms	5
Bathrooms	4.00
Full Baths	3
Half Baths	1
Square Footage	2,227
Acres	0.14
Year Built	2002
Type	Residential
Sub-Type	Detached
Style	2 Storey
Status	Active

Community Information

Address	35 Discovery Ridge Lane Sw
Subdivision	Discovery Ridge
City	Calgary

County	Calgary
Province	Alberta
Postal Code	T3H 4Y3

Amenities

Amenities	Park, Playground, Racquet Courts
Parking Spaces	4
Parking	Double Garage Attached, Front Drive
# of Garages	2

Interior

Interior Features	Built-in Features, Central Vacuum, Chandelier, Closet Organizers, Double Vanity, High Ceilings, Kitchen Island, No Smoking Home, Open Floorplan, Quartz Counters, Storage, Vinyl Windows, Walk-In Closet(s), Wired for Sound
Appliances	Dishwasher, Dryer, Garage Control(s), Gas Range, Range Hood, Refrigerator, Washer, Window Coverings
Heating	In Floor, Forced Air, Natural Gas
Cooling	None
Fireplace	Yes
# of Fireplaces	2
Fireplaces	Basement, Electric, Gas, Living Room
Has Basement	Yes
Basement	Finished, Full

Exterior

Exterior Features	BBQ gas line, Lighting, Private Yard
Lot Description	Back Yard, Cul-De-Sac, Landscaped, Street Lighting
Roof	Asphalt Shingle
Construction	Stone, Stucco
Foundation	Poured Concrete

Additional Information

Date Listed	April 24th, 2025
Zoning	R-G
HOA Fees	325
HOA Fees Freq.	ANN

Listing Details

Listing Office	Real Broker
----------------	-------------

Data is supplied by Pillar 9â„¸ MLSÂ® System. Pillar 9â„¸ is the owner of the copyright in its MLSÂ® System. Data is deemed reliable but is not guaranteed accurate by Pillar 9â„¸. The trademarks MLSÂ®, Multiple Listing ServiceÂ® and the associated logos are owned by The Canadian Real Estate Association (CREA) and identify the quality of services provided by real estate professionals who are members of CREA. Used under license.